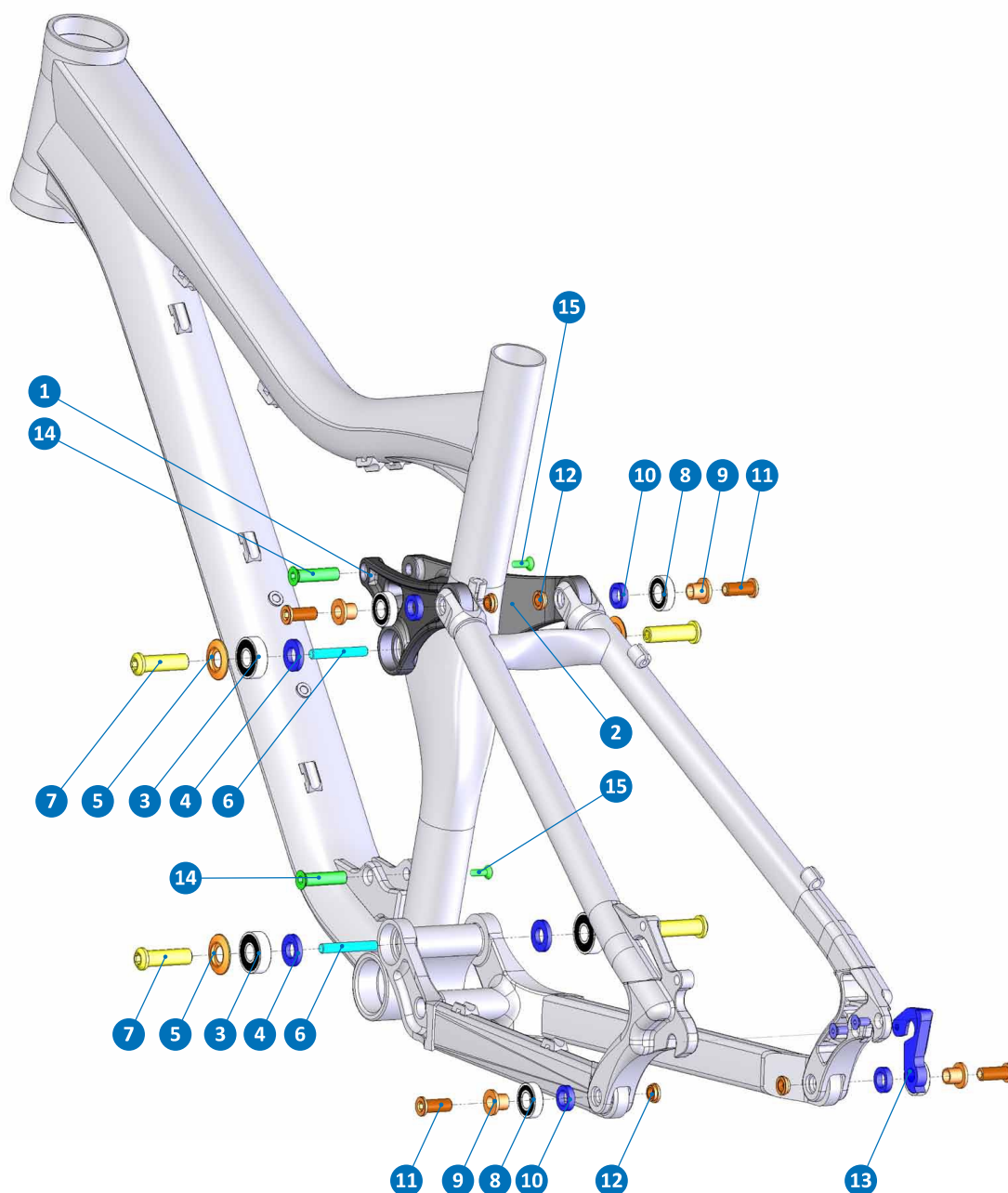


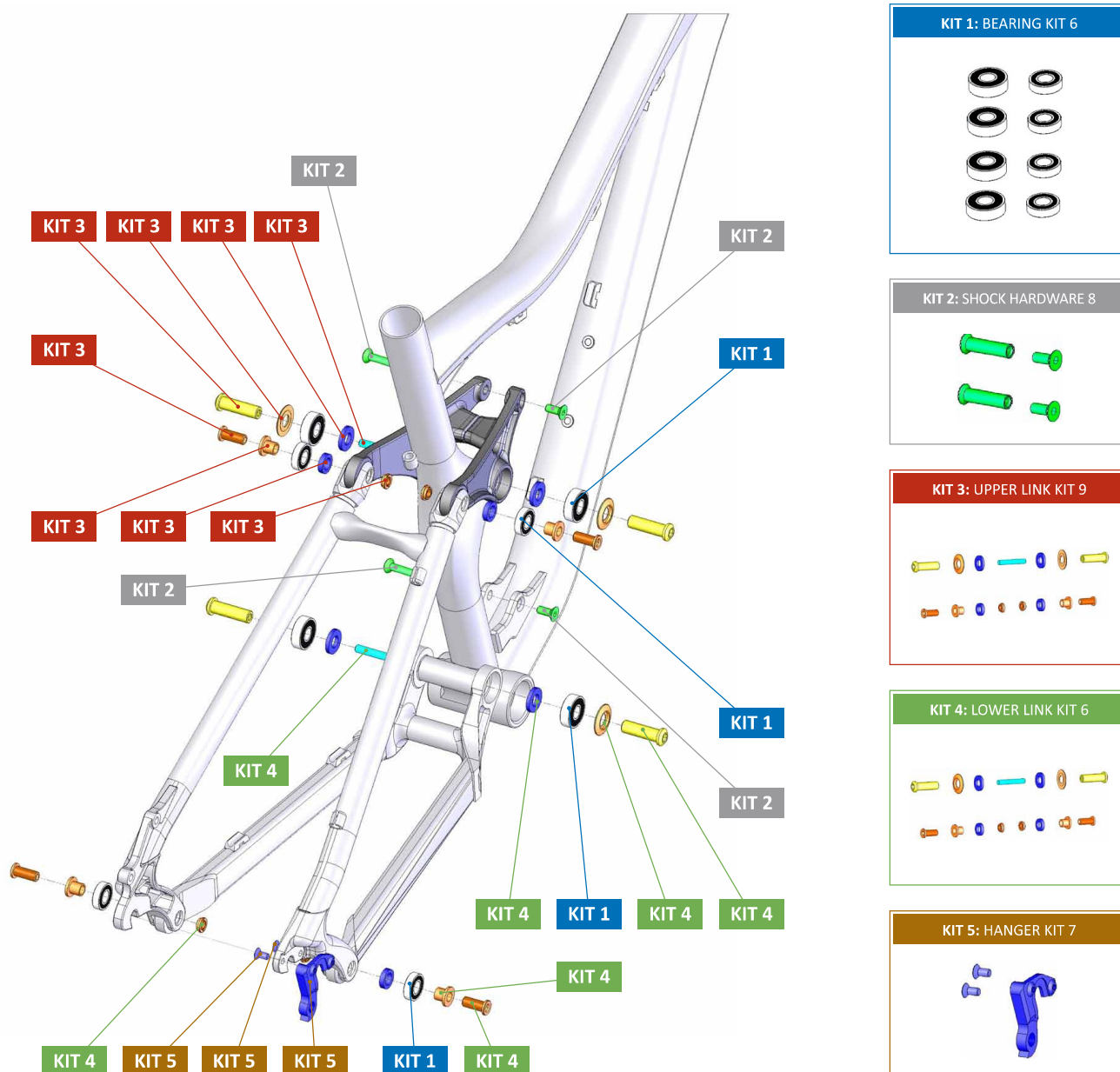
FACTOR



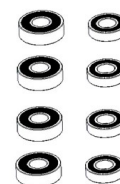
ITEM No.	DESCRIPTION	QTY.
1 - 2	UPPER LINK	1
3	6000 BEARING	4
4	D20x10d	4
5	TXC-DCV BEARING CAP	4
6	M6xL40	2
7	D10xL33	4
8	6900 BEARING	4
9	12MM AXLE	4
10	D16xD10 WASHER	4

ITEM No.	DESCRIPTION	QTY.
11	D9-L-21L	4
12	D9-R-4L	4
13	M006 HANGER	1
14	SLEEVE BOLT D8x32L	2
15	SCREW BOLT M6xP1.0	2

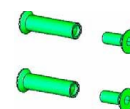
FACTOR



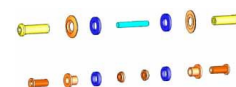
KIT 1: BEARING KIT 6



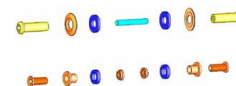
KIT 2: SHOCK HARDWARE 8



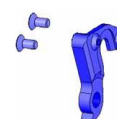
KIT 3: UPPER LINK KIT 9



KIT 4: LOWER LINK KIT 6



KIT 5: HANGER KIT 7



PART NUMBER	DESCRIPTION	COMPONENTS
099.12035	KIT 1: BEARING KIT 6	BEARING 6900-RS (x4) / BEARING 6000-2RS (x4)
099.13116	KIT 2: SHOCK HARDWARE 8	SLEEVE BOLT D8x32L (x2) / SCREW BOLT M6xP 1.0 (x2)
099.12036	KIT 3: UPPER LINK KIT 9	D10xL33 (x2) / TXC-DCV BEARING CUP (x2) / M6xL40 / D20x10d (x2) / D9-L-21L BOLT (x2) / 12MM AXLE (x2) / D16xd10 WASHER (x2) / D9-R-4 DO BOLT (x2)
099.12037	KIT 4: LOWER LINK KIT 6	D10xL33 (x2) / TXC-DCV BEARING CUP (x2) / M6xL40 / D20x10d (x2) / D9-L-21L BOLT (x2) / 12MM AXLE (x2) / D16xd10 WASHER (x2) / D9-R-4 DO BOLT (x2)
099.12038	KIT 5: HANGER KIT 7	M006 HANGER / M5x12L-M (x2)