

2014

ROCKY MOUNTAIN BICYCLES TECHNICAL MANUAL

April 7th Edition (Edited by M. Schröder April '14)



INTRODUCTION

No two riders are alike. That's why at Rocky Mountain, our bikes are built according to different platforms for different riding styles. The bikes may be different, but they all share our commitment to quality and innovation; bikes that are built by people who love to ride for people who love the ride.

OUR MISSION

Our goal is simple: build a high-grade quiver of bikes that riders will love to ride. It's the approach we take when we design, test, and build our extreme freeride bikes, our road racers, or any of our city bikes.

Whether you're looking for that certitude and grit to stick that big drop on the North Shore, the faith that you can push just a little harder to win your category, or the peace of mind in knowing you have the reliability in your city bike to take you on your daily commute, you need to have confidence in your bike to really love the experience.

So, to ensure that every rider who rides a Rocky Mountain bicycle has the confidence that they have the best bike there is, we employ a higher standard of manufacturing. Visit our R&D design and testing facility in Vancouver, BC, Canada, and you'll see this adherence to quality for yourself.

Lubrication

All IGUS bushing exterior surfaces shall be greased. Grease is also required where the bolt contacts metal such as a bearing or the frame.

After washing with water the bushing area should be sprayed lightly with WD-40 to disperse water, wiped clean to prevent dirt buildup and then re-greased. Caution: prolonged exposure to water can cause the bushings to swell.

Installation

The process for installation and removal is quite simple. They are a mild friction fit and do not need any special tools to install or remove. To install, using a pivot thru- bolt works best. Slip the bushing with the round starter edge towards the frame over the thru-bolt, insert the thru-bolt with the bushing against the base of the bolt head and the round starter edge against the frame, into the pivot mount hole and tap lightly until the bushing is FLUSH with the face of the pivot mount. Once the bushings are installed, grease them with the recommended lubricant.

Removal

Using a round metal dowel, gently punch the bushings through from the opposite side. Always replace with new bushings when re-installing.

Seatpost Insertion Explained:

Seat post must be inserted at least 100mm (4 inches) on all full suspension frames for warranty to remain valid; this is to ensure maximum support of the saddle during riding!!!!

Hardware and Torque Specification:

All custom hardware (alloy thru-bolts, screws, and nuts) requires the use of LOCTITE 243 (blue) a medium strength thread-lock. The torque specification unless otherwise stated is 100 to 110 in*lbs or 11.3 to 12.4 Nm.

Non custom hardware (steel bolts) requires the use of LOCTITE 243 (blue), a medium strength thread-lock. The torque specification unless otherwise stated is 60 to 80 in*lbs or **6.7 to 9.0 Nm**.

Frame and Linkage Bearing Installation

Warning: This is a difficult procedure that needs to be done by an experienced mechanic. Without a proper press and press-in tools parts can get damaged very easily. If there is any uncertainty understanding this procedure, contact Rocky Mountain Bicycles for assistance at: 1.800.663.2512

-To begin, ensure that all surfaces are clean, dry and free of any contaminants. It is recommended to use Loctite Primer 7649 on any linkage pieces and the bearings before installing bearings. This will speed the cure time but mostly will ensure proper cure of retaining compound.

-Once the primer is dry apply Loctite Bearing Retaining Compound 638 or red or green Loctite or equivalent to each linkage piece just before each bearing is pressed in. Ensure that the bearing has completely bottomed out in the linkage before assembling linkage to frame.

Again, caution should be taken as these bearings need to be pressed in square to the pivot using proper tools.

IGUS Bushings Explained

Rocky Mountain Bicycles have been using low maintenance IGUS Bushings for many years. They are used to assist the rotation of our custom 12mm thru-bolt hardware.

There are 3 lengths of these bushings, 8, 10 and 15mm and all have a 12mm inside diameter with a 14mm outside diameter. Also there are the 45° angled ABC IGUS inserts #180444IGS. These will be found on all platforms INSTINCT, ALTITUDE, ELEMENT and THUNDERBOLT. These bushings will be grease ex works, but will need a certain care and slight lubrication during lifetime.

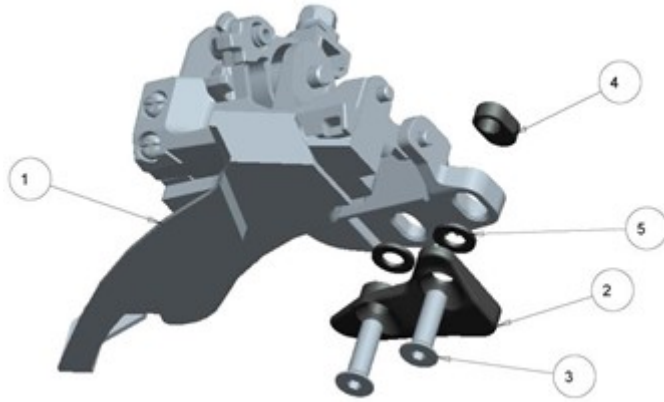
Suspension Setup

To maximize suspension performance, the sag (the amount the shock compresses under rider weight) must be set correctly. A good starting point is to inflate the rear shock with one psi per pound of rider body weight. We recommend the following sag percentages:

Please refer to your rear shock owner's manual for additional shock tuning information!

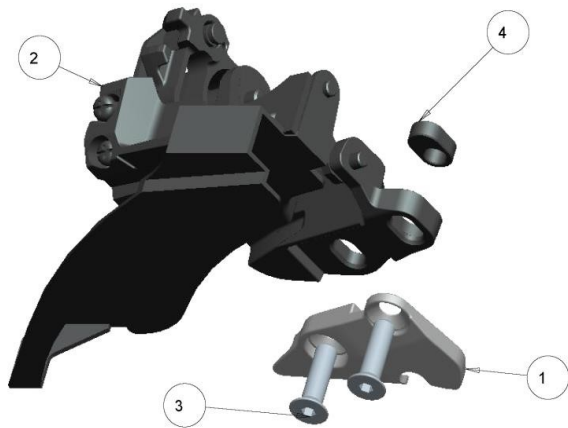
PLATFORM	SAG %
ELEMENT	15%
THUNDERBOLT	25%
INSTINCT	25-30%
ALTITUDE	25-30%
SLAYER	25-30%

E-Type Front Derailleur Kits ELEMENT/INSTINCT/ALTITUDE



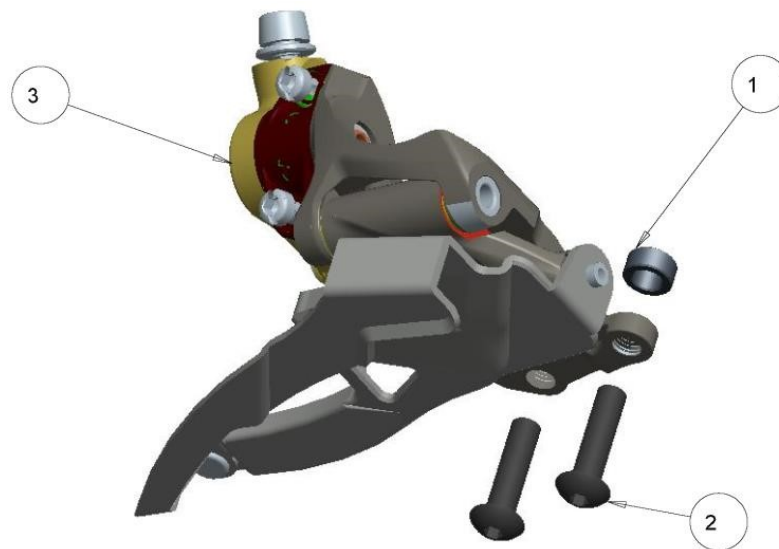
Shimano FD 2 Speed

#	QTY	Part No.	Description
1	1	N/A	Shimano E-Type Mount 2 Sp. FD
2	1	1091042PMG	2Sp. Anti Chain Drop Plate AL6061-T6
3	2	180565FBY-018	Flat Head C'Sunk M5-0.8x16mm
4	1	180473	Slot Spacer AL6061
5	2	180049FBY	Washer M8 ZP,M5



Shimano FD 3 Speed

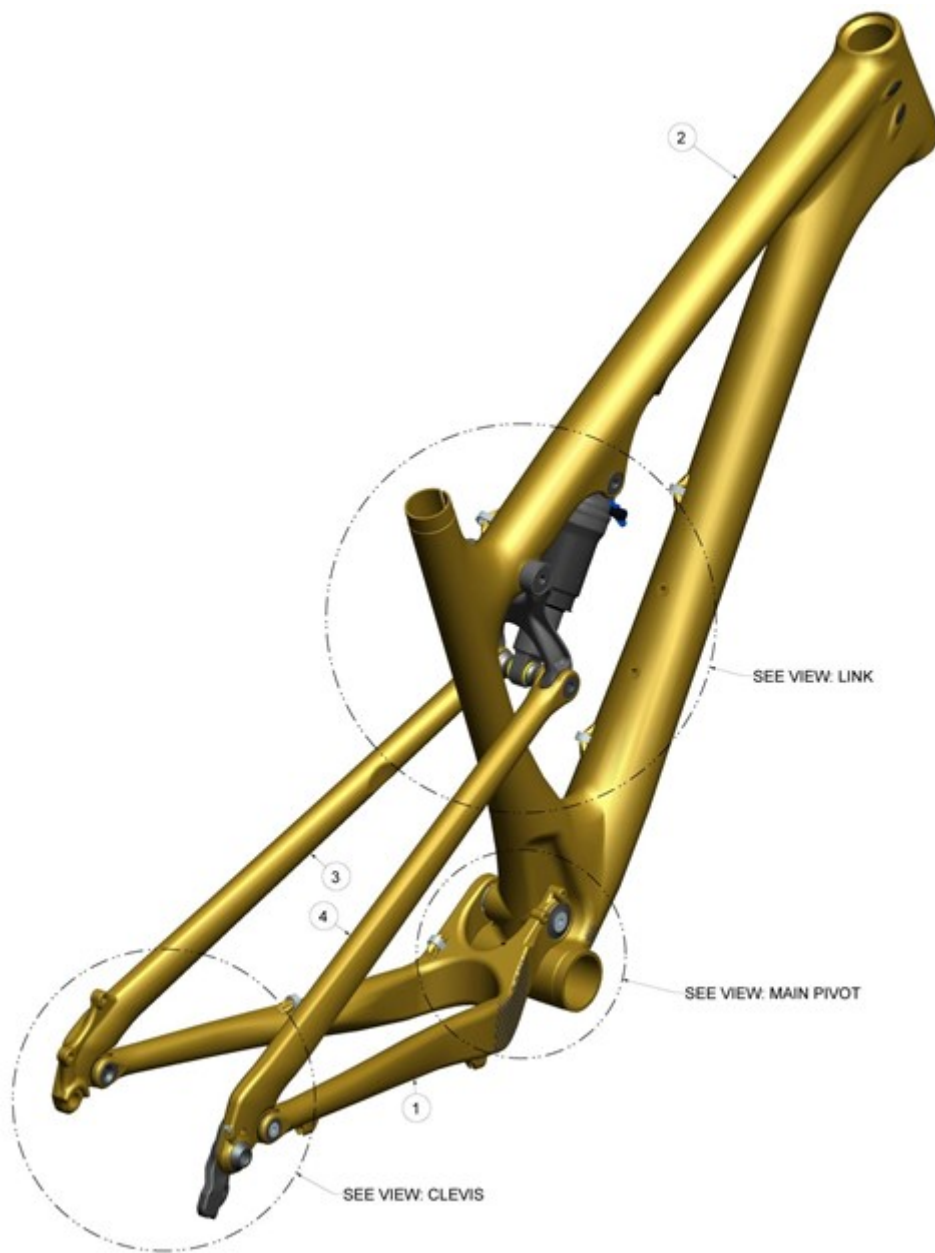
#	QTY	Part No.	Description
1	1	1091040	Anti Chain Drop Plate Shimano 3sp. AL6061-T6
2	1	N/A	Shimano FD 3 Sp.
3	2	180565FBY-018	Flat Head C'Sunk M5-0.8x16mm
4	1	180473	Slot Spacer AL6061



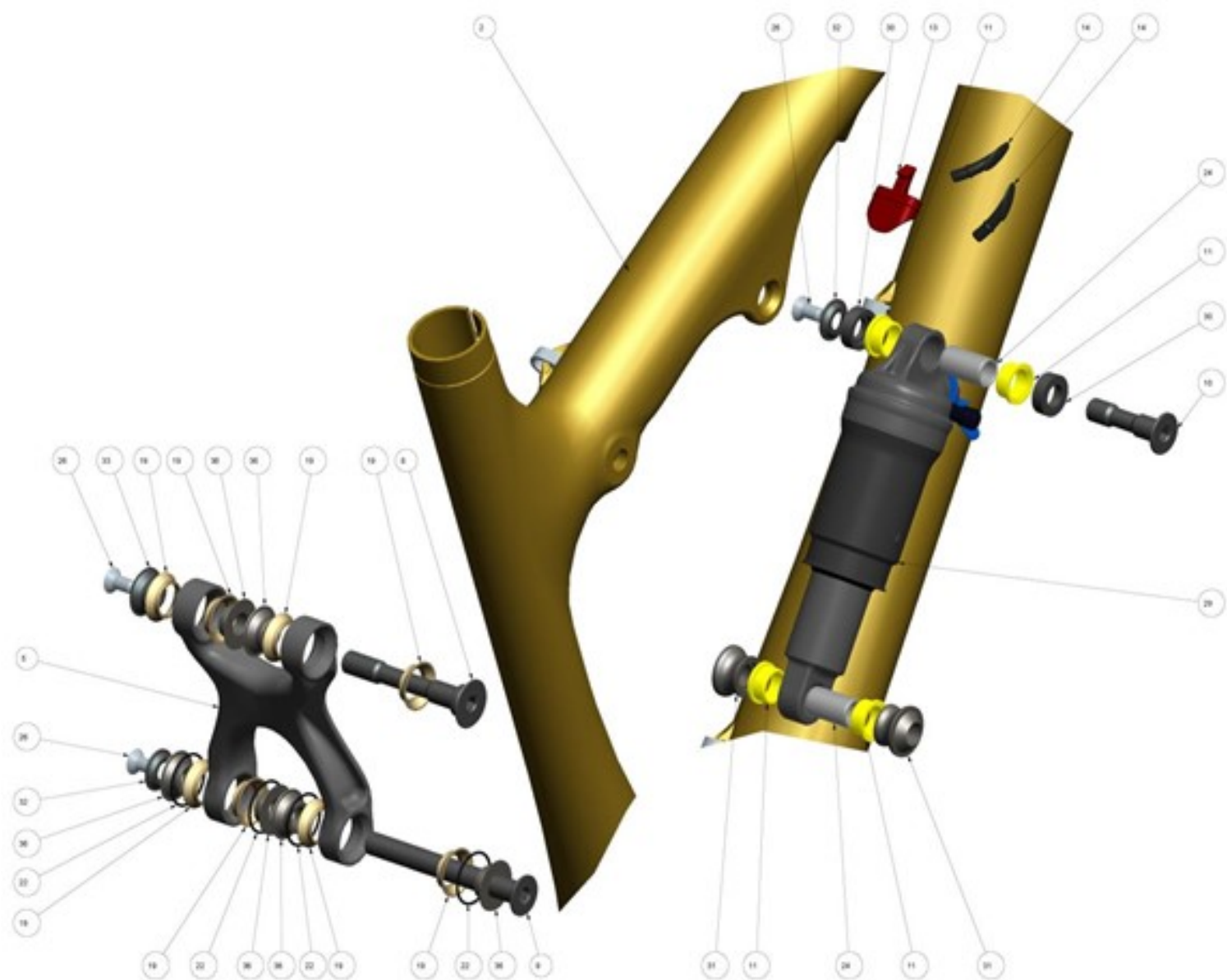
SRAM FD 2/3 Speed

#	QTY	Part No.	Description
1	1	180537	FD Spacer f. SRAM Al6061
2	2	180574FBY	Dome Head Screw M5x20mm
3	1	N/A	SRAM FD 2or 3 Speed

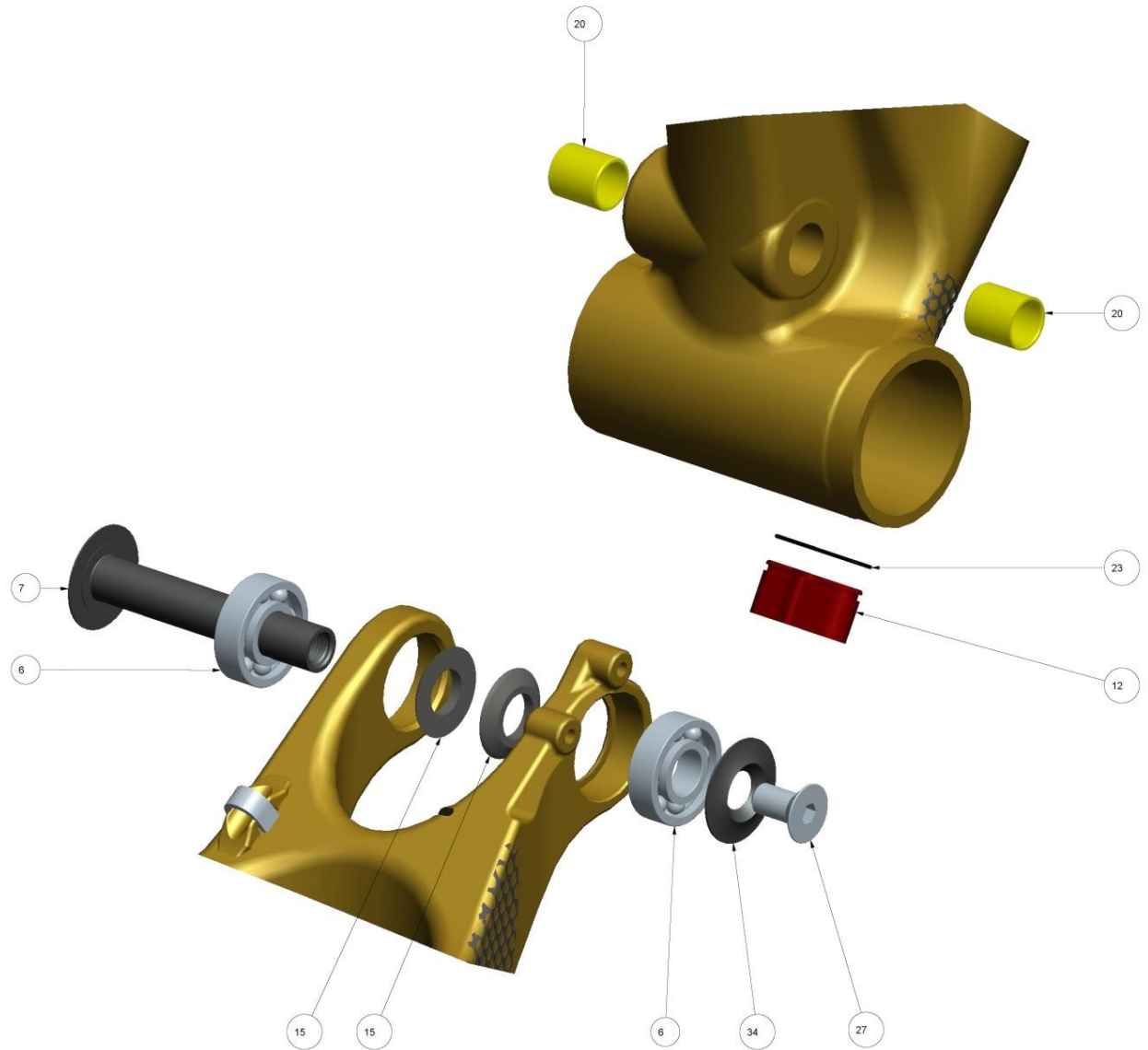
2014 Element 29" RSL



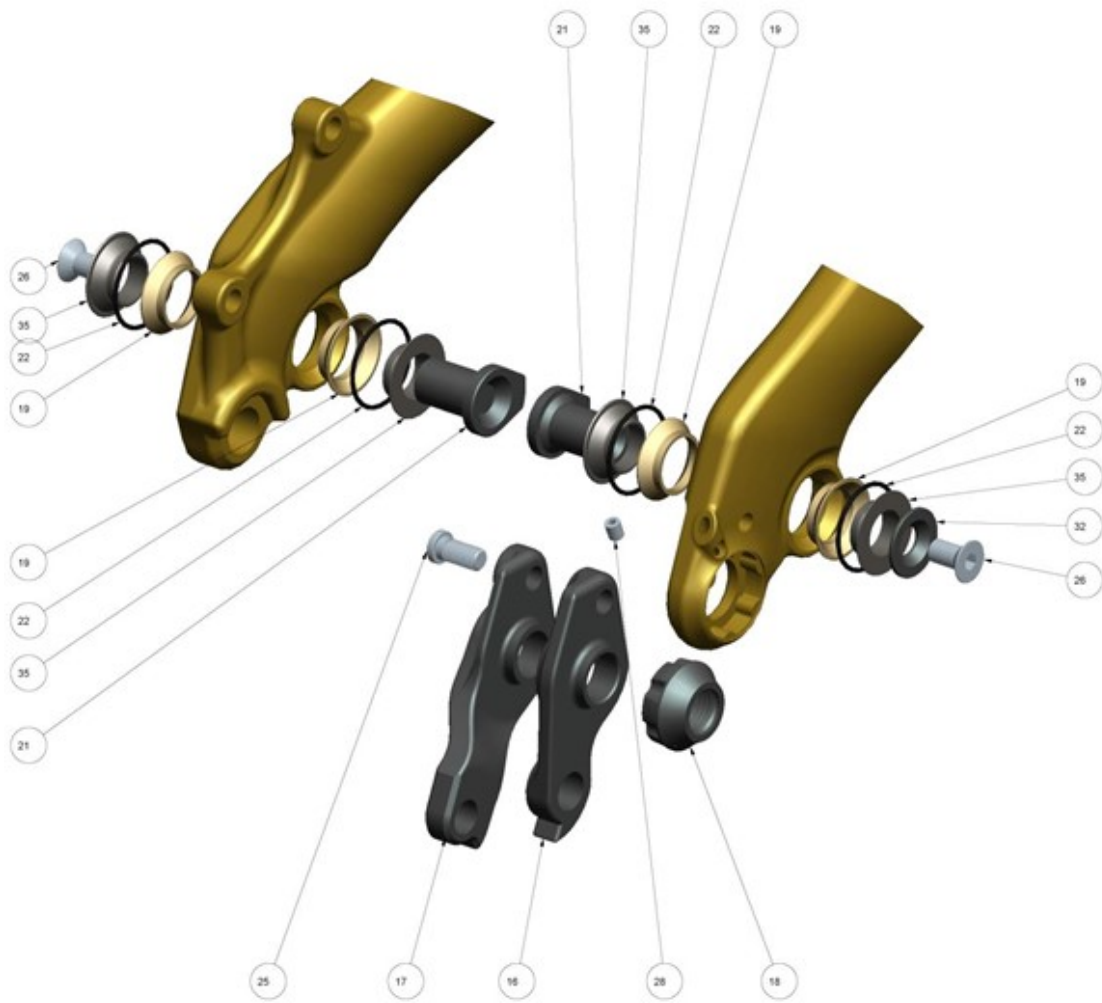
2014 Element 29" RSL – Link View



2014 Element 29" RSL – Main Pivot View



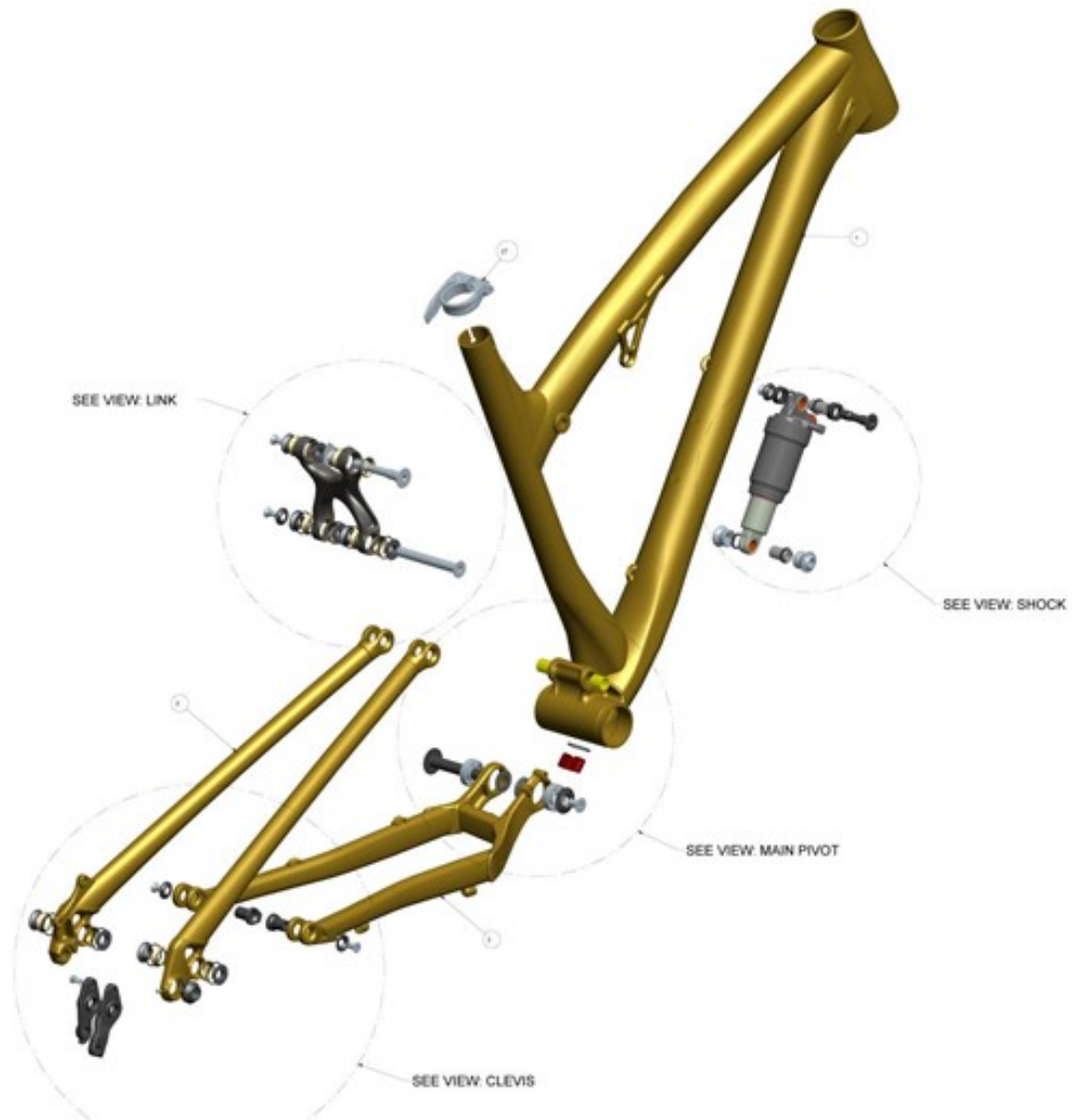
2014 Element 29" RSL – Clevis View



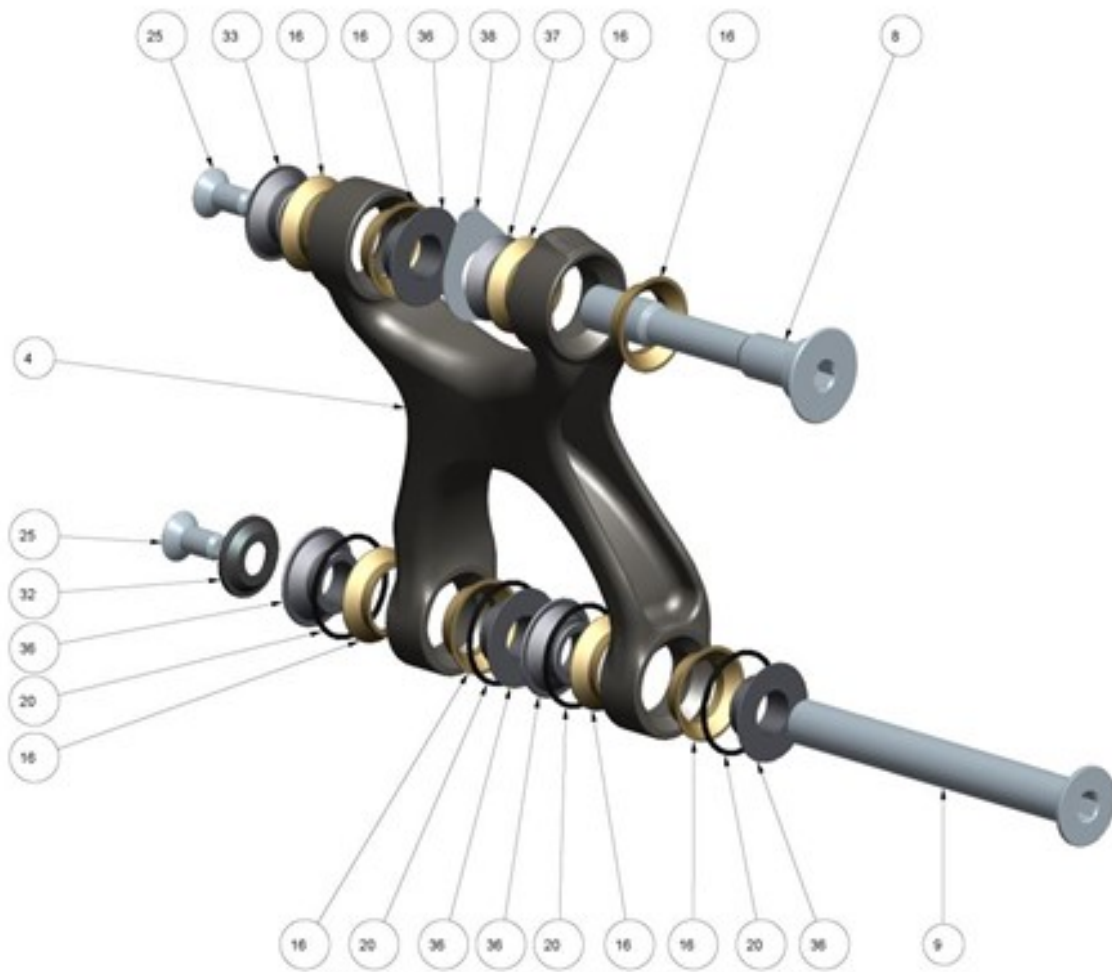
2014 Element 29" RSL Small Parts

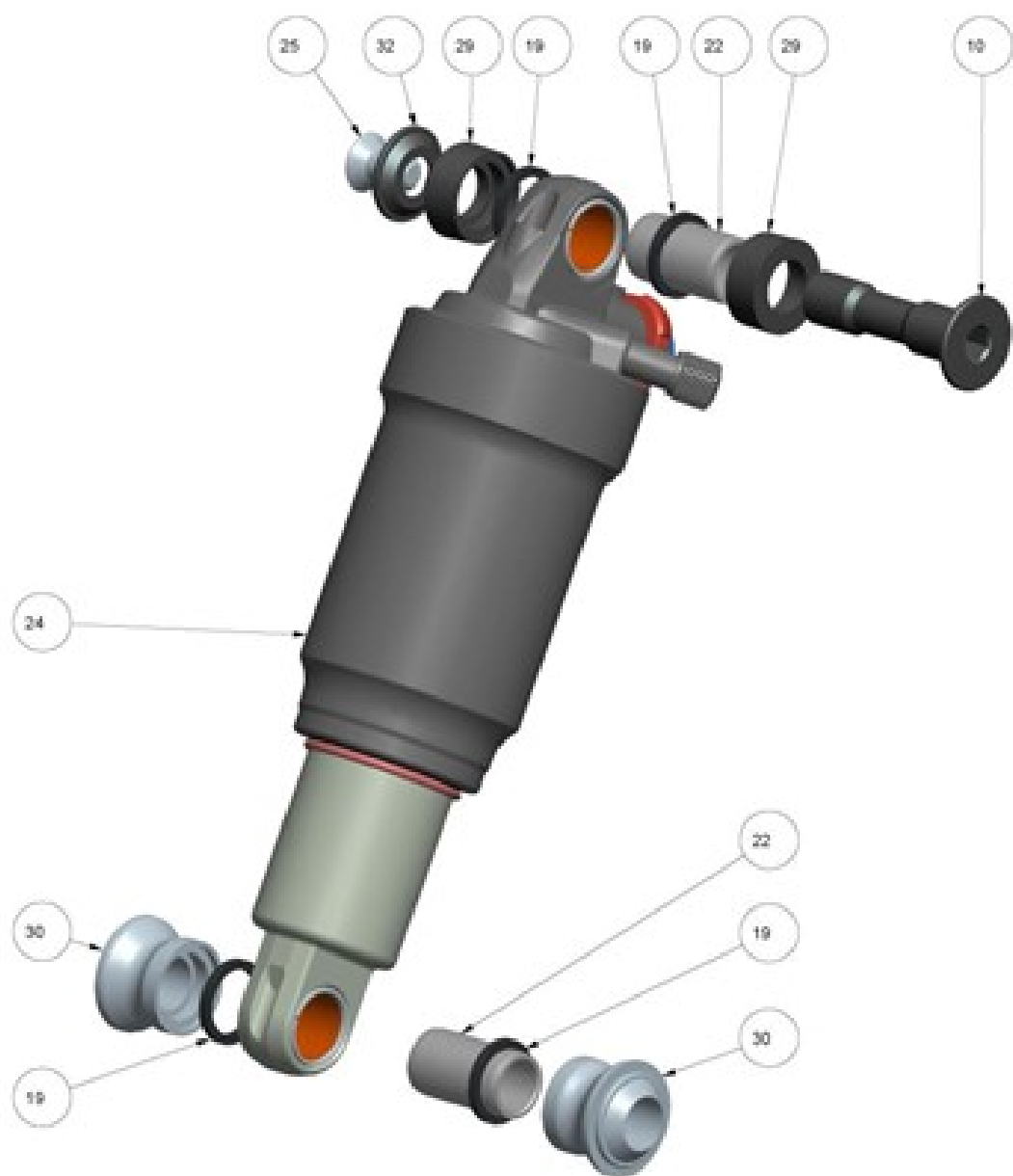
Item #	QTY	Part No.	Description
1	1	1053150PMG	Element 29" Carbon Chainstay
2	1	1063231PMG	Element 29" Carbon Front Triangle
3	1	1053179PMG	Element 29" Carbon Seat Stay LEFT
4	1	1053180PMG	Element 29" Carbon Seat Stay RIGHT
5	1	1092182	Alloy 1 Piece Top Link 95 mm
6	2	181063	Bearing 12x28x8 6001 2 RS
7	1	180466-070	28mm Flange Head Thru Blt. Int. M8x1,25 12x70mm
8	1	180492UAT	C' Sunk Thru Bolt 12x68 mm M6
9	1	180496UAT	C' Sunk Thru Bolt 10x85 mm M6
10	1	180527	Element WC Shock Bolt 10 x 41 mm
11	4	N/A	FOX Custom Bushing
12	1	1092019	Internal Cable Stop
13	1	1093000	Internal Cable Guide Top Tube
14	2	1093001	Internal Cable Port Plug Rubber
15	2	180545	Conical Washer 12 mm OD24 3 mm THK
16	1	1092020	Rep. Der. Hanger SRAM / Shimano 12x142
17	1	1093002	Rep. Der. Hanger Shimano DIRECT MOUNT Only!
18	1	180448	RH Drop Out Nut Shimano 142 mmx 12
19	12	180444IGS	IGUS Angular Contact Bearing J3
20	2	1804016IGS	Bushing IGUS I Glide J350-1214-15 ID12mm
21	2	180463-021	Key Head C'sunk Bolt M6-1.0 Thread
22	8	180543	O-Ring ID 20mm W-1.25 Nitrile
23	1	180572	O-Ring ID 14 mm W 1.5 Nitrile
24	2	111989FOX	Shock Pin Custom ID 10 x 22,2mm
25	1	180487-012	Custom Low Flat Head Screw M6-1.0
26	5	180566-012FBY	Flat Head C'Sunk Socket Screw M6-1.0 x 12 mm
27	1	180567-016FBY	Flat Head C'Sunk Socket Screw M8-1.25 x 16 mm
28	1	180571FBY	Set Screw Flt. M4 x 0.7
30	2	3113000	Shock Reducer Frt.
31	2	3113001	Shock Reducer Rear FOX
32	4	180476AST	C'Sunk Washer ID 6 x OD 18 x 3.0 mm
33	1	180494UAT	Washer Angular Poly Brg.
34	1	180499AST	Bearing Cap OD 28 mm M8
35	4	180490PMG	Washer Angular Poly Brg.
36	6	180493UAT	Washer Angular Poly Brg.

2014 Element 29" Alloy

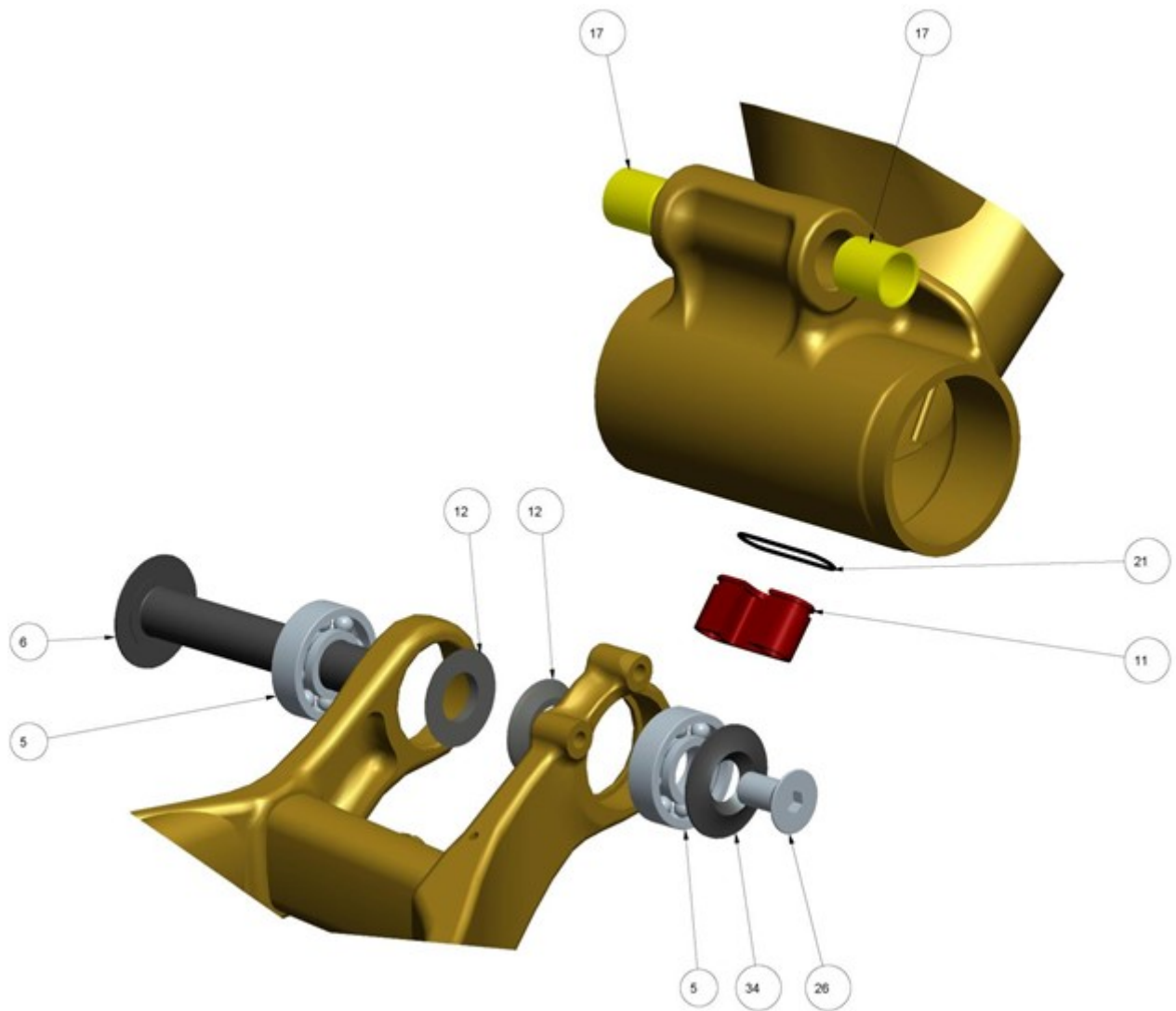


2014 Element 29" Alloy – Link View

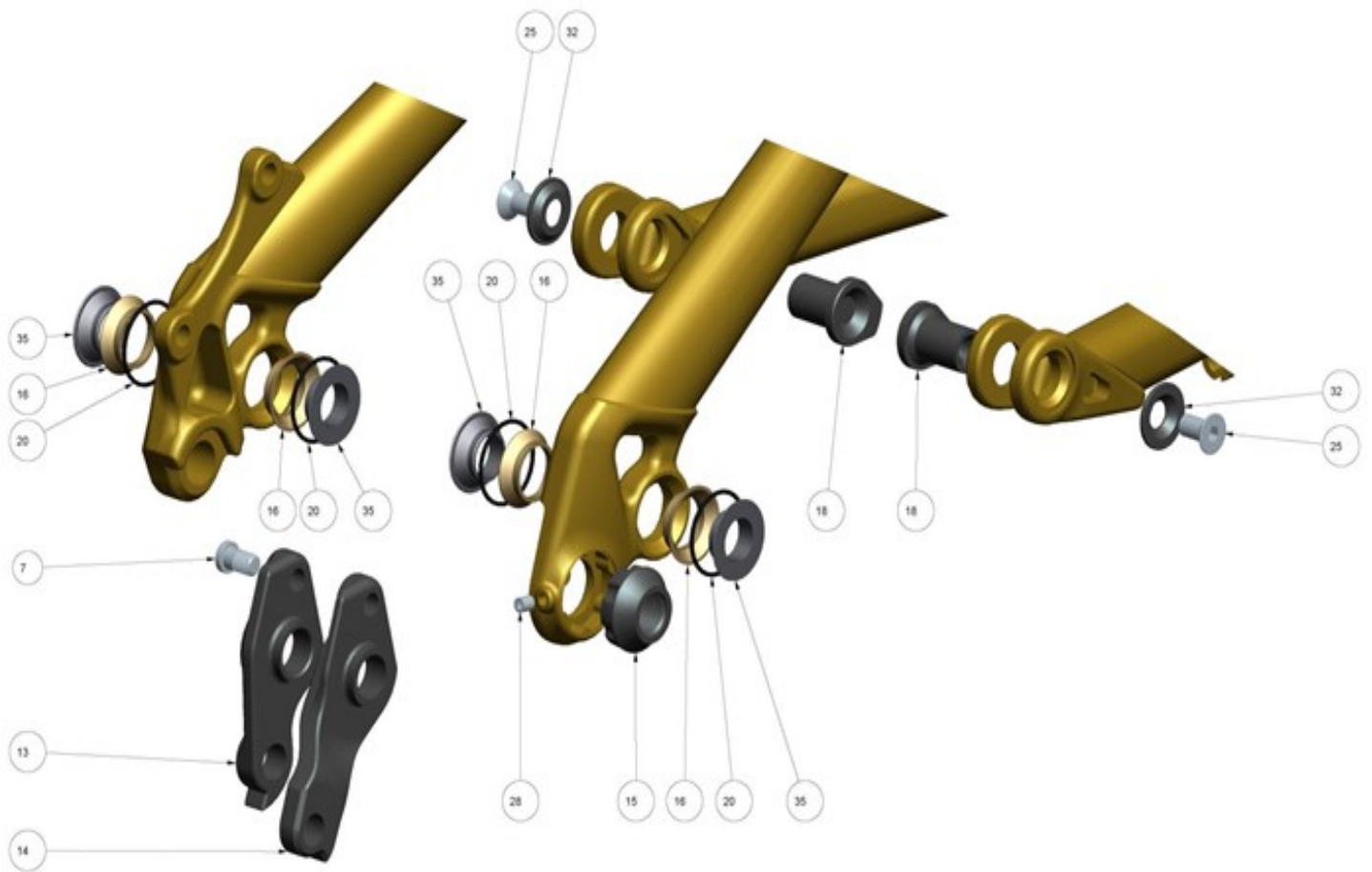




2014 Element 29" Alloy – Main Pivot View



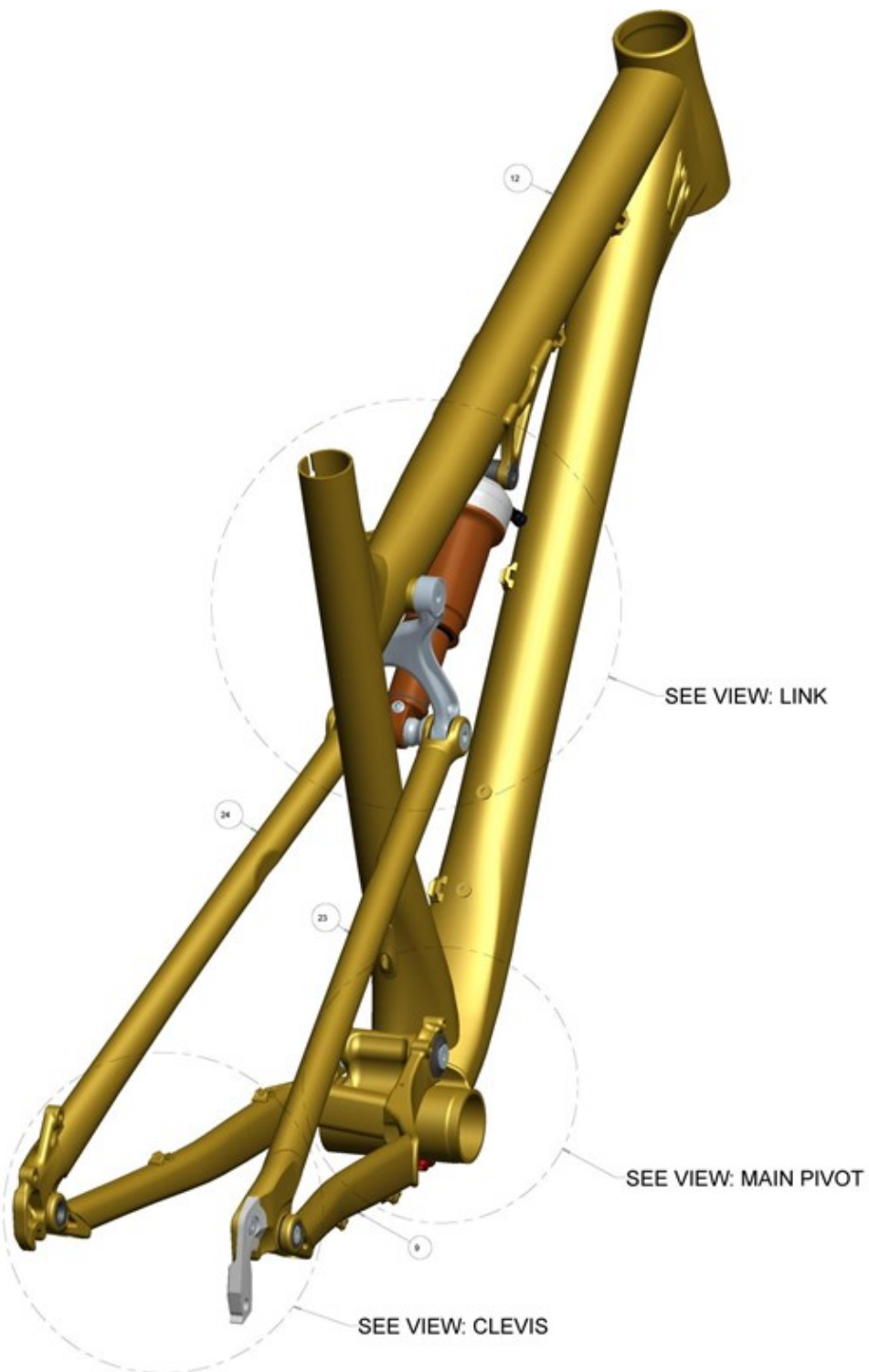
2014 Element 29" Alloy – Clevis View



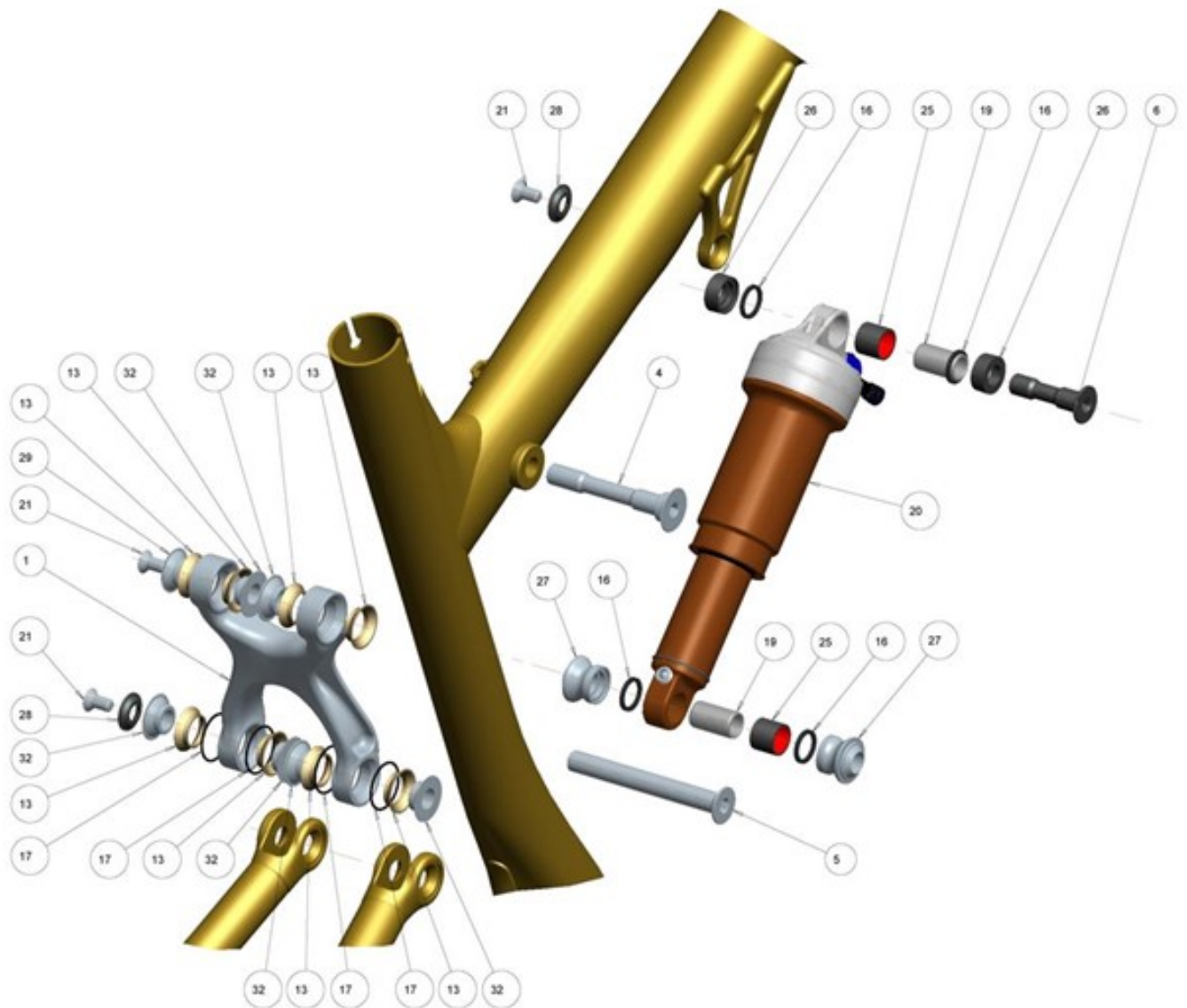
2014 Element 29" Alloy Small Parts

Item #	QTY	Part No.	Description
1	1	10612004MEK	Element 29" Alloy Front Triangle
2	1	1052501MEK	Element 29" Alloy Chainstay Weldment
3	1	10512079-80MEK	Element 29" Alloy Seat Stay LEFT + RIGHT
4	1	1092182	Alloy 1 Piece Top Link 95 mm
5	2	181063	Bearing 12x28x8 6001 2 RS
6	1	180466-070	28mm Flange Hd. Thru Blt. Int. M8x1,25 12x70mm
7	1	180487-010	Custom Low Flat Head Shoulder Screw M6 x 10 mm
8	1	180492UAT	C' Sunk Thru Bolt 12x68 mm M6
9	1	180496UAT	C' Sunk Thru Bolt 10x85 mm M6
10	1	180527	Element WC Shock Bolt 10 x 41 mm
11	1	1092019	Internal Cable Stop Insert Al7005
12	2	180545	Conical Washer 12 mm OD24 3 mm THK
13	1	1092020	Rep. Der. Hanger SRAM / Shimano 12x142
14	1	1093002	Rep. Der. Hanger Shimano DIRECT MOUNT Only!
15	1	180448	RH Drop Out Nut Shimano 142 mmx 12
16	12	180444IGS	IGUS Angular Contact Bearing J3
17	2	1804016IGS	Bushing IGUS I Glide J350-1214-15 ID12mm
18	2	180463-021	Key Head C'sunk Bolt M6-1.0 Thread
19	4	180522	Rubber O-Ring Fox Shock Pin
20	8	180543	O-Ring ID 20 mm W 1.25 Nitrile
21	1	180572	O-Ring ID 14 mm W 1.5 Nitrile
22	2	111989FOX	Shick Pin Custom ID 10 x 22,2 mm
23	1	N/A	Shimano Axle AX75
24	1	N/A	Rear Shock
25	5	180566-012FBY	Flat Head C'Sunk Socket Screw M6-1.0 x 12 mm
26	1	180567-016FBY	Flat Head C'Sunk Socket Screw M8-1.25 x 16 mm
27	1	165382JDM	JD Seat QR 34,9 mm
28	1	180571FBY	Set Screw Flt. M4 x 0.7
29	2	180509	Shock Reducer ID 10 OD12.7 x 22,2 mm
30	2	180495UAT	Shock Reducer Rear ID 10 mmAl7075-T6
31	1	N/A	SRAM E-Mount FD
32	4	180476AST	C'Sunk WasherID 6 x OD 18 mm
33	1	180494UAT	Alloy Washer Angular Poly Brg.
34	1	180499AST	Bearing Cap OD 28 x M8 mm
35	4	180490PMG	Alloy Washer Angular Poly Brg. ID 12 mm
36	5	180493UAT	Washer Angular Poly Brg.
37	1	180506UAT	Washer Angular Poly Brg. No Flange ID10 L3.35
38	1	180507UAT	Washer Element SAG Indic. Arrow

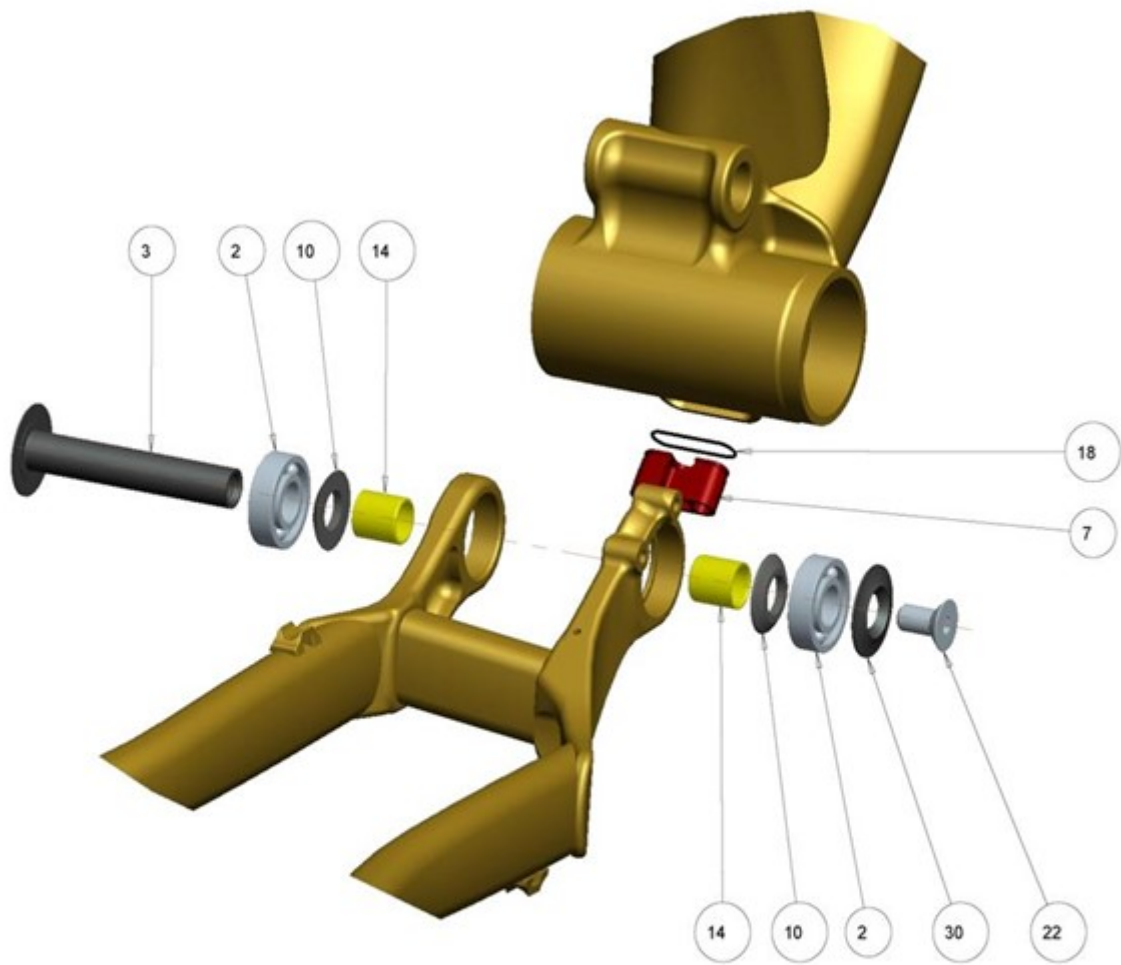
2014 Thunderbolt



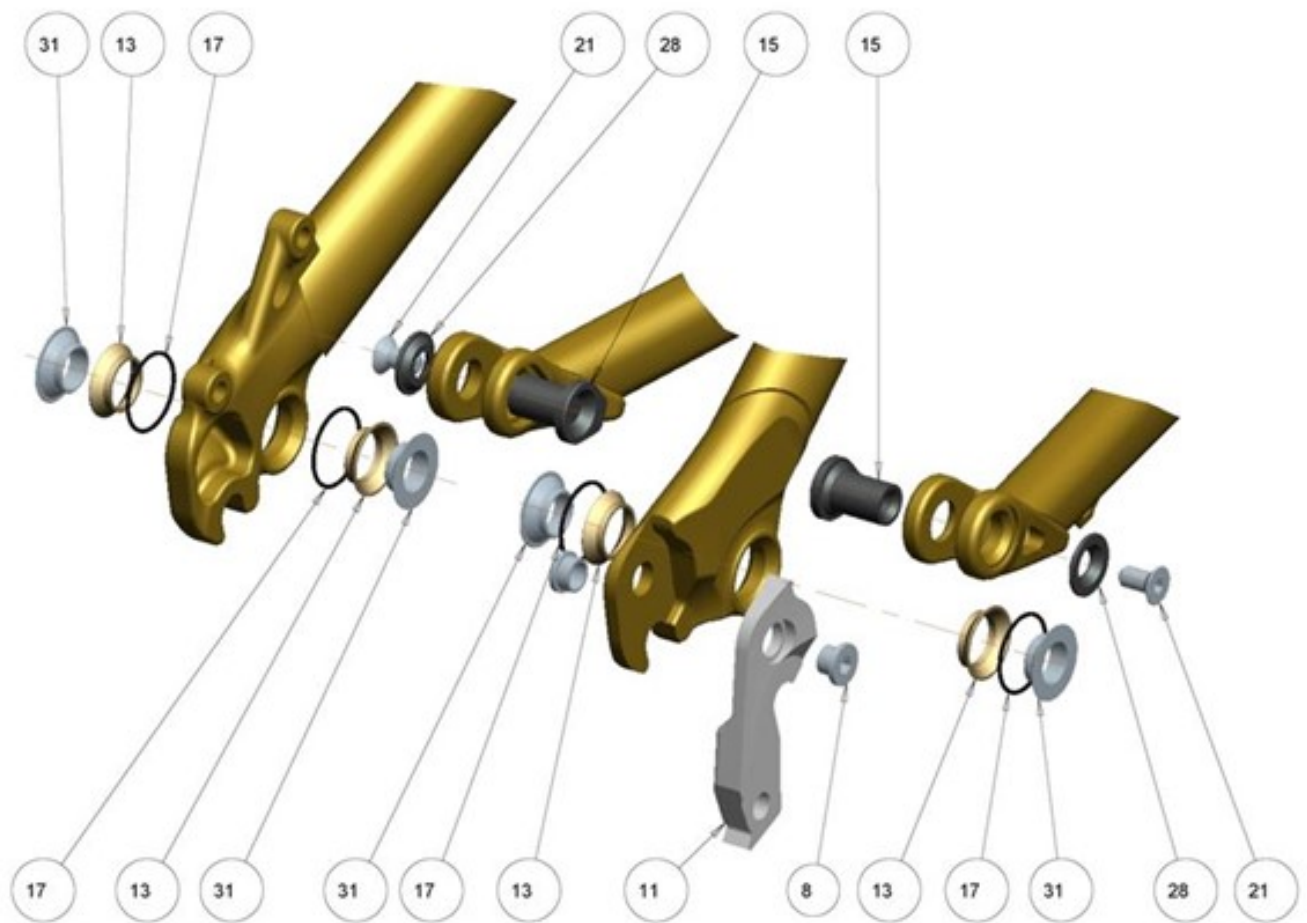
2014 Thunderbolt – Link View



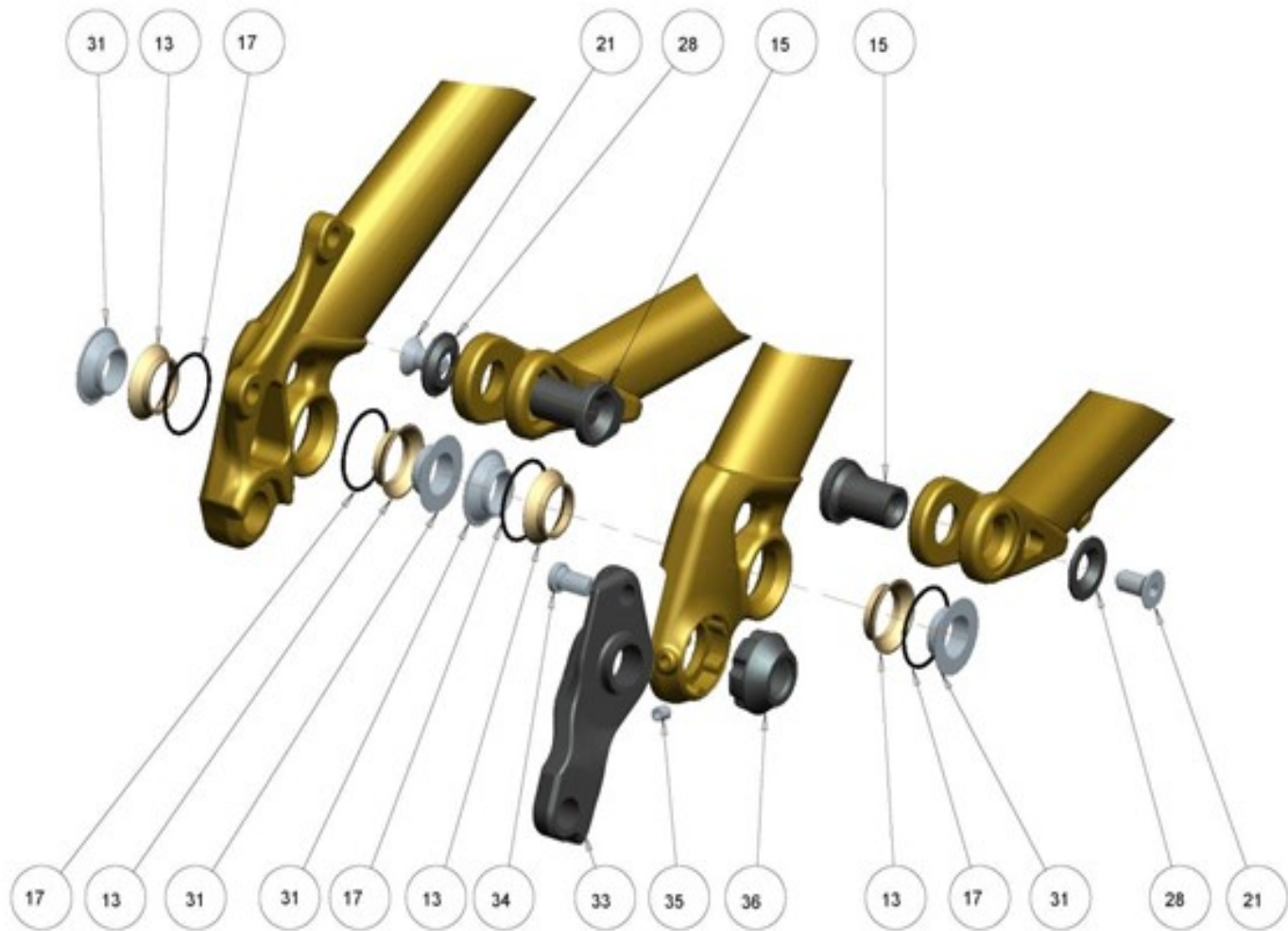
2014 Thunderbolt – Main Pivot View



2014 Thunderbolt – Clevis View



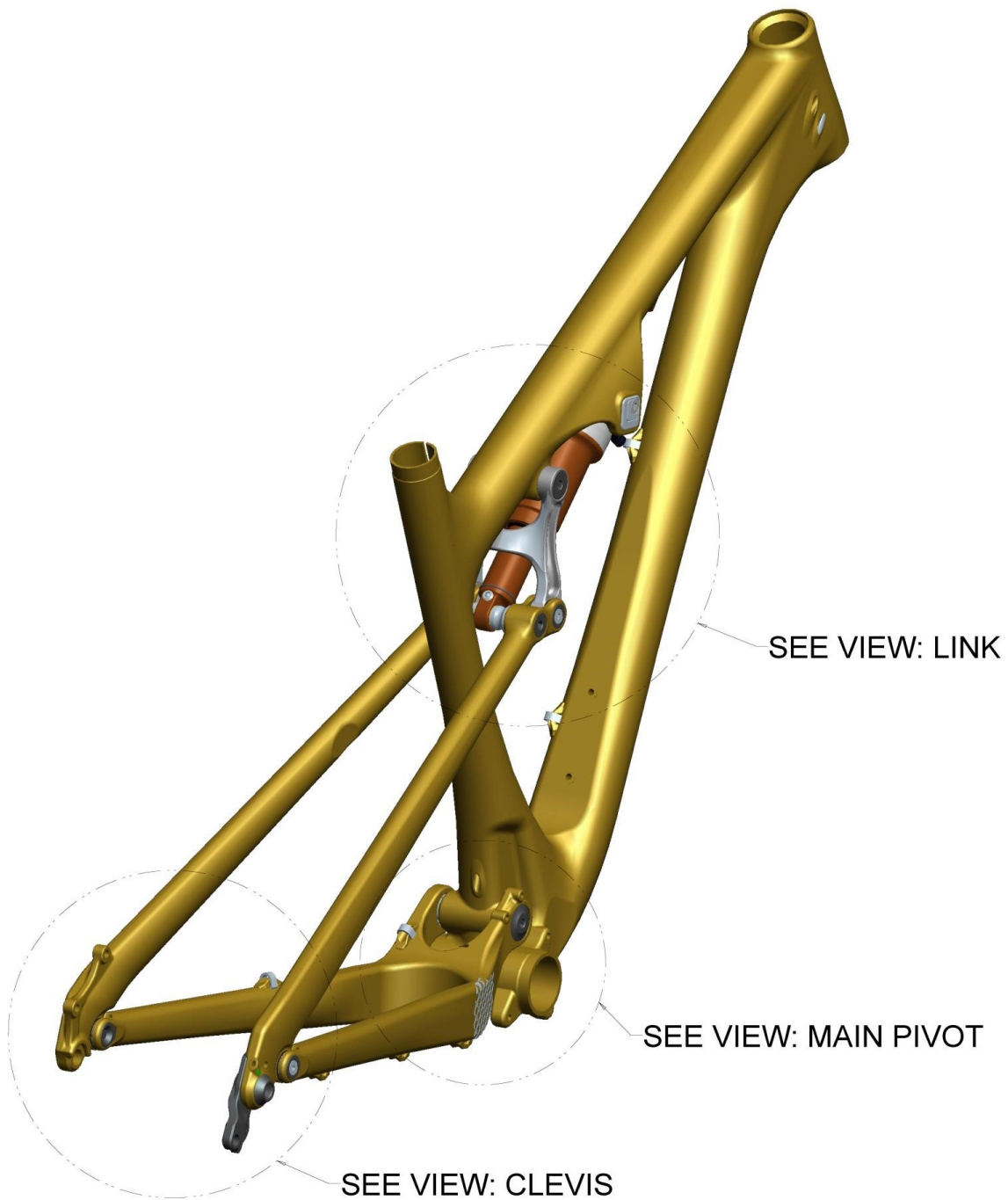
2014 Thunderbolt – Clevis View – Through-Axle Models



2014 Thunderbolt Small Parts

Item #	QTY	Part No.	Description
1	1	1092182	Element/Thunderbolt 1 Piece Top Link 95 mm
2	2	181063	Bearing 12 x 28x8 6001 2RS 28 mm
3	1	180466-070	28 mm Flange Bolt Thru M8 x 70 mm
4	1	180492UAT	C'Sunk Thru Bolt 12 mm x 68 M6
5	1	18496UAT	C'Sunk Thru Bolt OD 10 mm x 85 M6
6	1	180527	Element Shock Bolt OD 10 mm L 41 mm
7	1	1092019	Internat Cable Stop Insert
8	1	180510RUX	Chainring Nut Bolt M 8-0.75 x 5 mm
9	1	1054500MEK	Thunderbolt Chainstay Weldment
10	2	180545	Conical Washer ID 12 mm x 3 mm
11	1	1098095AST	Rep. Der. Hanger AL7005-T6
12	1	1064183MEK	2014 Thunderbolt AL 650B Front Triangle
13	12	180444IGS	IGUS Angular Contact Brg. J3
14	2	1804016IGS	Bushing Igus I-Glide J350-1214-15 ID 12 mm
15	2	180463-021	Key Head C'Sunk L Bolt Int M6-1.0 OD 12 mm
16	4	180522	Rubber O-Ring FOX Shock Pin
17	8	180543	O-Ring ID 20 mm W 1.25 Nitrile
18	1	180572	O-Ring ID 14 mm W 1.5 Nitrile
19	2	111989FOX	Shock Pin ID 10 mm x22.2 mm
20	1	N/A	Rear Shock 7,5" x 2,0"
21	5	180566-012 FBY	Flat Head C'Sunk Socket Screw M6-1.0 x 12 mm
22	1	180567-016 FBY	Flat Head C'Sunk Socket Screw M8-1.25 x 16 mm
23	1	1054502MEK	2014 Thunderbolt Alloy Seat Stay Open DO, RH
24	1	1054503MEK	2014 Thunderbolt Alloy Seat Stay Open DO, LH
25	2	N/A	Shock Bushing ID 12.7x OD 15 mm L 12.7 mm
26	2	180509	Shock Reducer ID 10 mm outer Span 28 mm
27	2	180495UAT	Shocjk Reducer Rear STD ID 10 mm AL 7075-T6
28	4	180476AST	C'Sunk Washer f. M6 ID6 x OD 18 x 3 mm
29	1	180494UAT	Washer Angular Poly Brg.
30	1	180499AST	Bearing Cap OD 28 mm M8 AL6061-T6
31	4	180490PMG	Washer Angular Poly Brg.
32	6	180493UAT	Washer Angular Poly Brg.

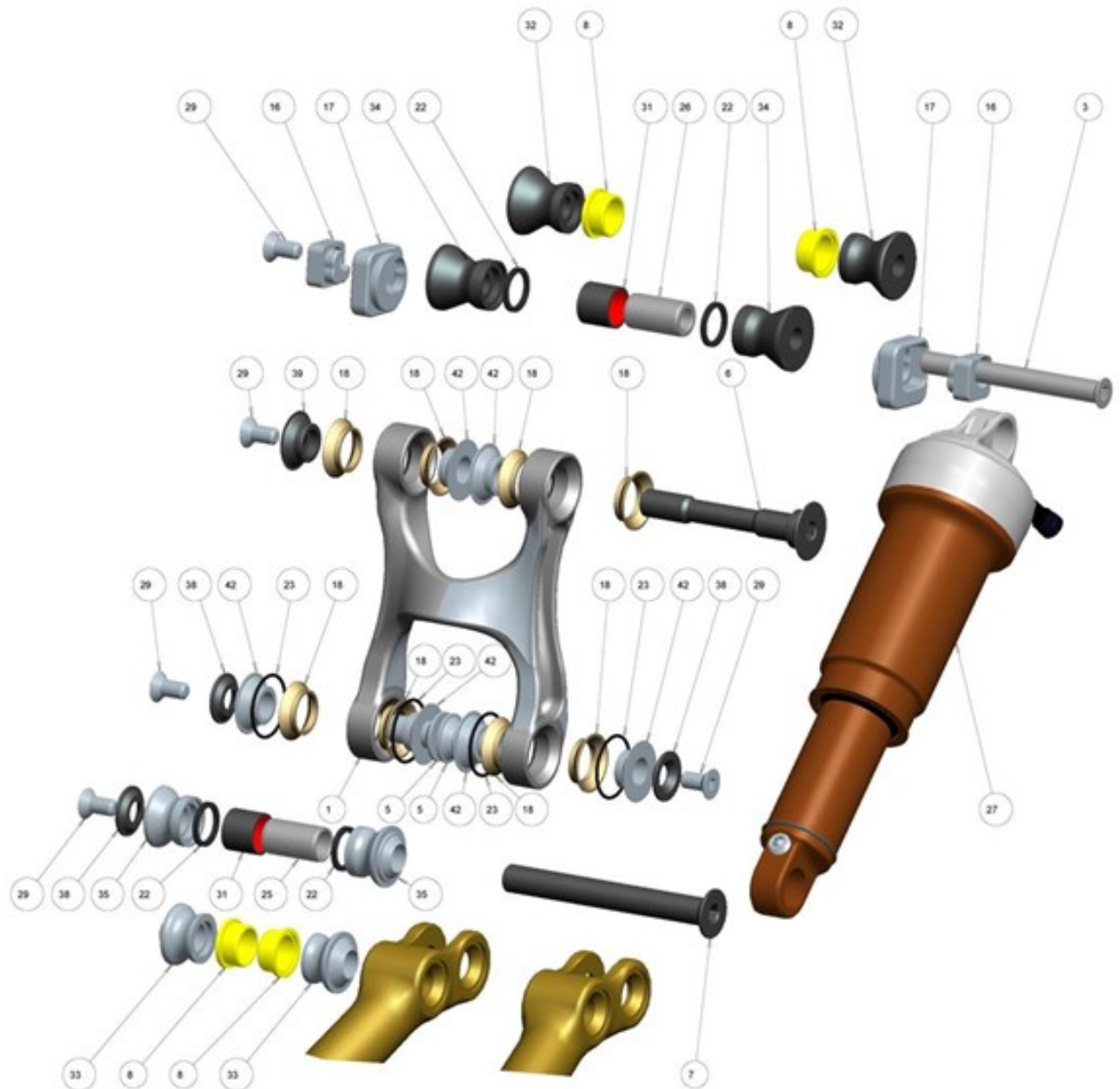
2014 Altitude/Instinct Carbon



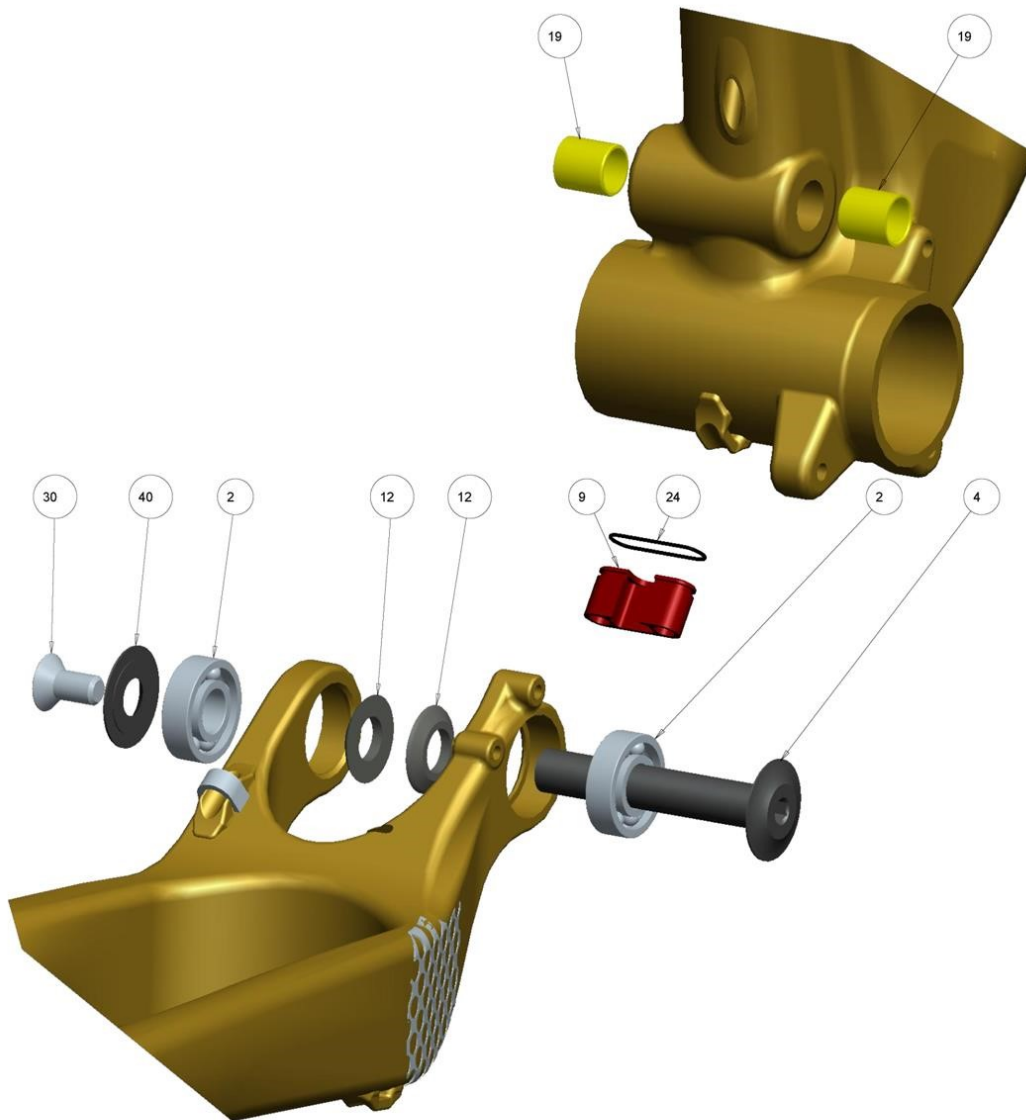
2014 Altitude/Instinct Carbon – Link View

Part 8, 32, 33 for use with FOX shock

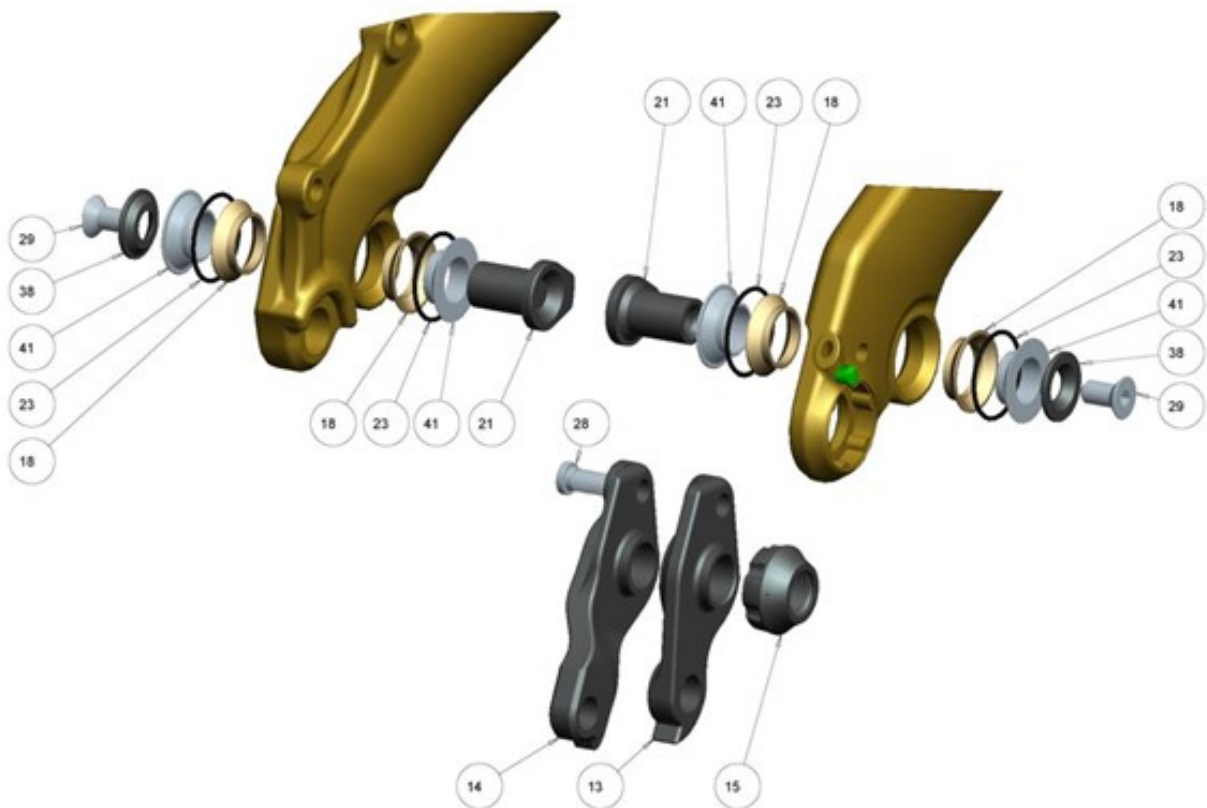
Part 34, 35, 22, 31 for use with Rock Shox shock



2014 Altitude/Instinct Carbon – Main Pivot View



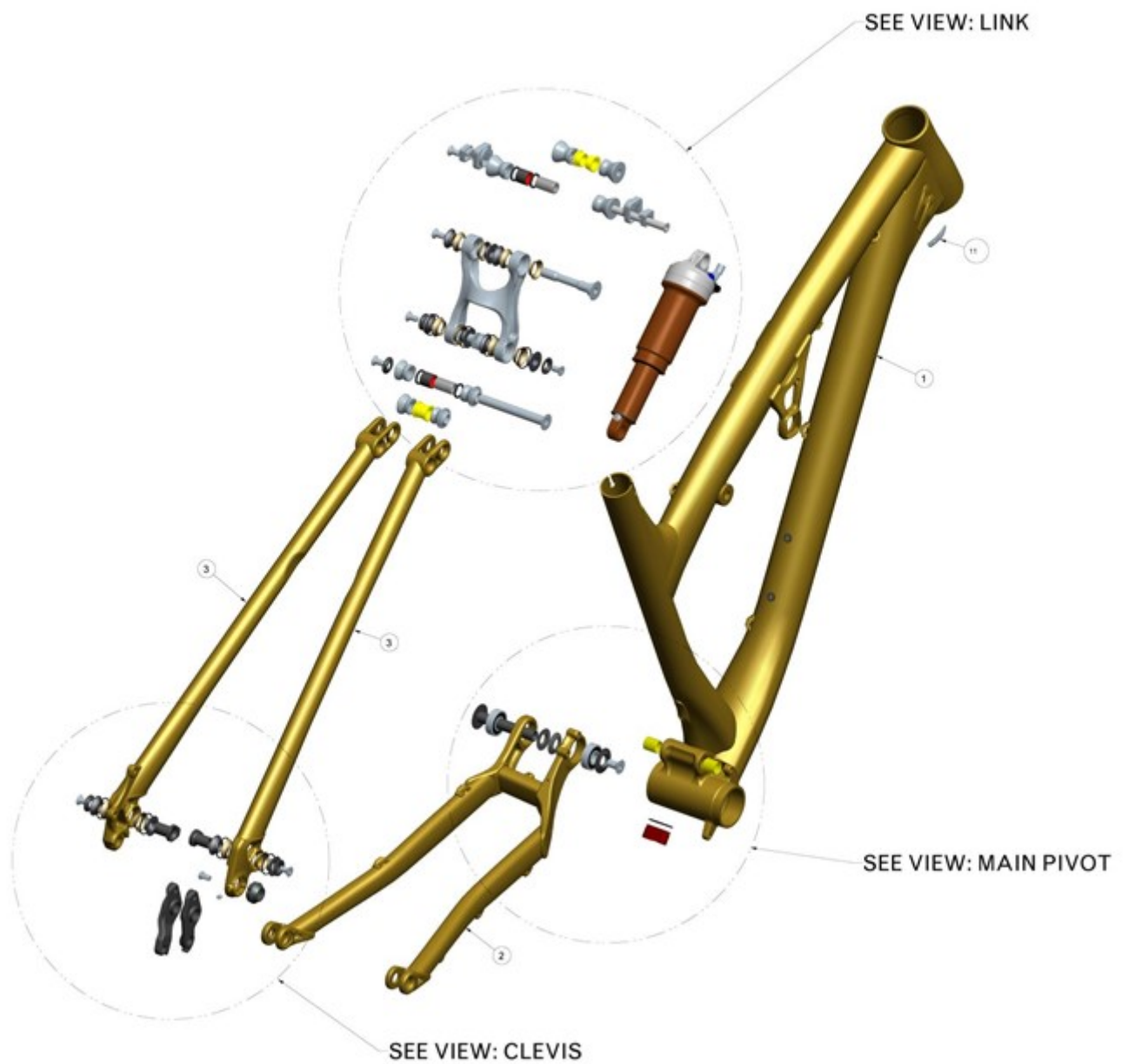
2014 Altitude/Instinct Carbon – Clevis View



2014 Altitude/Instinct Carbon Small Parts

Item #	QTY	Part No.	Description
1	1	1093182	Altitude Instinct Top Link Alloy 95 mm
2	2	181063	Bearing 12 x 28x8 6001 2RS
3	1	180630	Custom Flat Head Bolt 8 x 60 mm M6
4	1	180466-070	28mm Flange Head Thru Blt int. M8x1.25 OD12x70
5	2	180491UAT	C'Sunk Thru Bolt OD 10 mm x 21 M6
6	1	180492 UAT	C'Sunk Thru Bolt OD 12 x 68 mm M6
7	1	180496UAT	C'Sunk Head Thru Bolt OD 10 x 85 mm int. M6
8	4	N/A	FOX IGUS Bushings
9	1	1092019	Internal Cable Stop Insert AL7075-T6
10	1	1054510	2014 Instinct 29 Carbon Chainstay
12	2	180545	Conical Washer ID 12 mm
13	1	1092020	Rep. Der. Hanger SRAM/Shimano
14	1	1093002	Rep. Der. Hanger Shimano DIRECT MOUNT Only!
15	1	180448	Drop Out-Nut M12-1.5
16	2	180628	Flip Chip inner AL7075
17	2	180629	Flip Chip outer AL 7075
18	12	180444IGS	IGUS Angular Bearing Contact J3
19	1	1064271	2014 Instinct 29 Carbon Front Triangle
20	2	180463-021	Key Head C'Sunk L Bolt M6-1.0 OD 12 x 21mm
21	4	180522	Rubber O-Ring FOX Shock Pin
22	8	180543	O-Ring ID 20 mm W 1.25.Nitrile
23	1	180572	O-Ring ID 14 mm W 1.5 Nitrile
24	1	111989FOX	Shock Pin ID 10. 22.2 mm
25	1	N/A	Custom Shock Pin ID 8 x 22.2 mm
26	1	N/A	Rear Shock 7.5" x 2.0"
27	1	180487-012	Custom Low Flat Head Shoulder Screw M6-1.0 x 12
28	7	180566-012FBY	Flat Head C'Sunk Socket Screw M6-1.0 x 12mm
29	1	180567-016FBY	Flat Head C'Sunk Socket Screw M8 -1.25 x 16mm
30	2	N/A	Shock Bushing
31	2	180631	Shock Reducer IGUS Fox ID 8 OD 12.7 x 22.2mm
32	2	3113001	Shock Reducer Rear Fox Custom
33	2	3113003	Shock Reducer Std. ID 8 mm OD 12.7x22.2mm
34	2	180495UAT	Shock Reducer Rear Std. ID 10 mm
35	1	1054513	2014 Instinct 29 Seat Stay Carbon LH
36	1	1054512	2014 Instinct 29 Seat Stay Carbon RH
37	5	180476AST	C'Sunk Washer f. M6 Screw
38	1	180494UAT	Washer Angular Poly Brg.
39	1	180499AST	Bearing Cap OD 28 mm M8
40	4	180490PMG	Washer Angular Poly Brg.
41	6	180493UAT	Washer Angular Poly Brg.

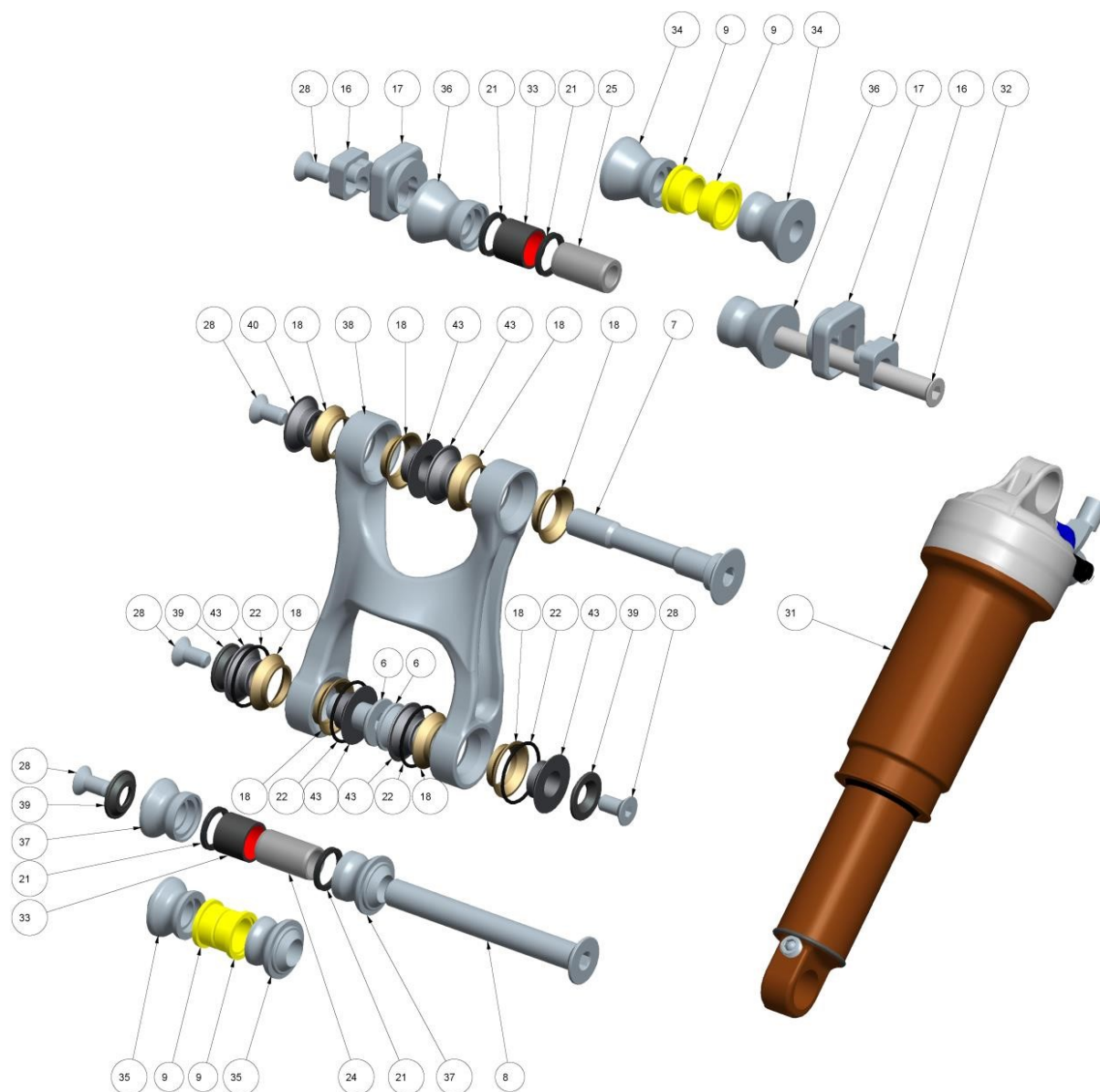
2014 Instinct/Altitude Alloy



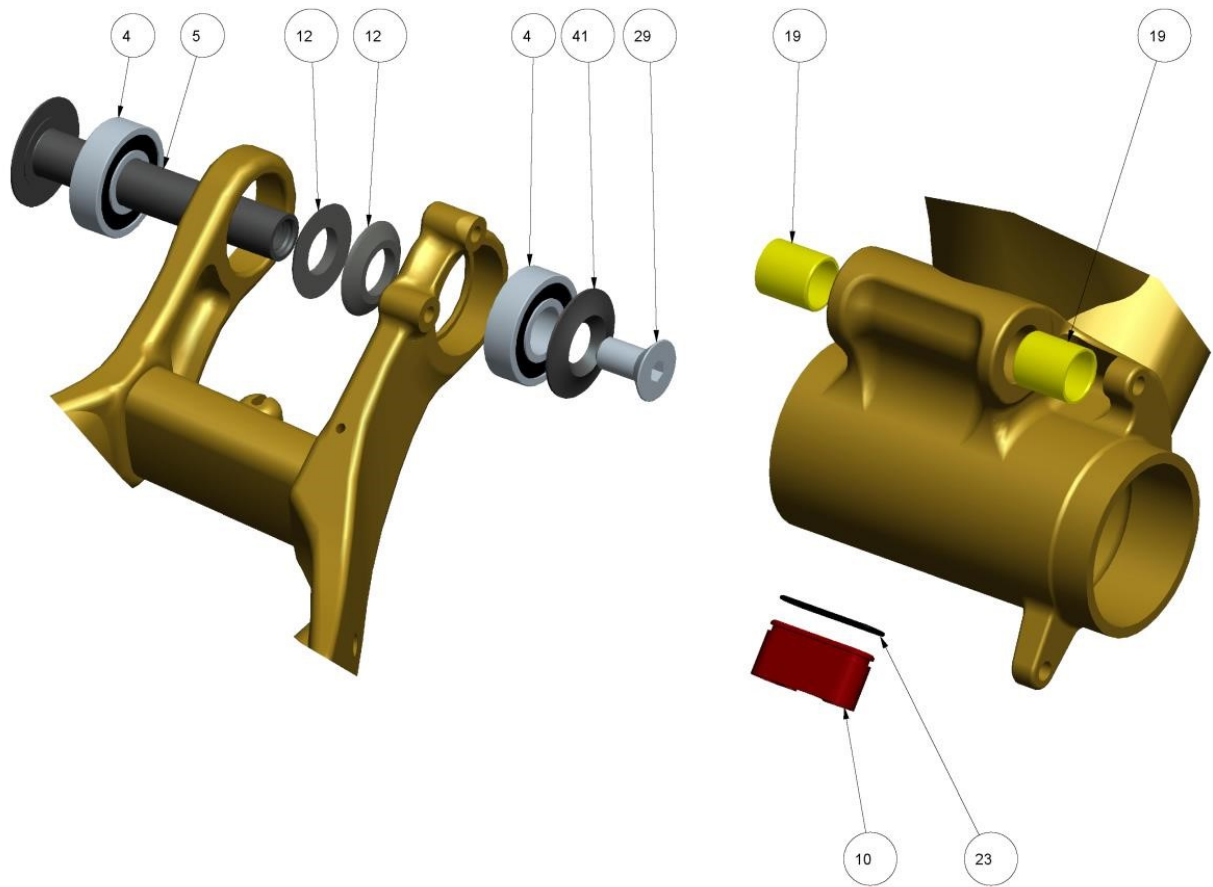
2014 Instinct/Altitude Alloy – Link View

PART 9, 34, 35 FOR USE WITH FOX SHOCK

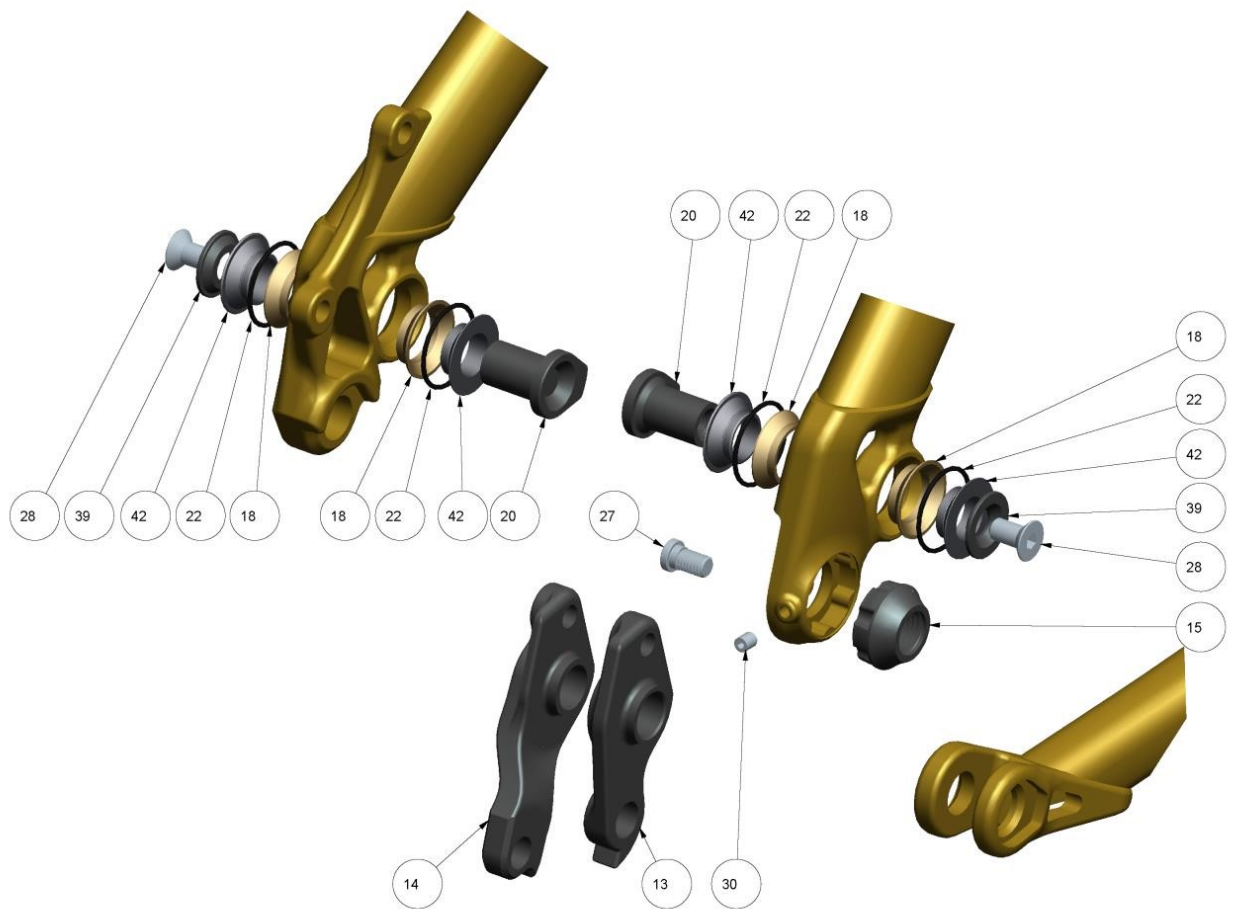
PART 21, 25, 33, 36 FOR USE WITH ROCK SHOX SHOCK



2014 Instinct/Altitude Alloy – Main Pivot View



2014 Instinct/Altitude Alloy – Clevis View



2014 Instinct/Altitude Alloy Small Parts

Item #	QTY	Part No.	Description
1	1	1063132	2013 Altitude AL Front Triangle
2	1	1053130MEK	2013 Altitude 650B Chainstay Weldment
3	1	1053132-33MEK	2013 Altitude 650B Chainstays RH/LH
4	2	181063	Bearing 12x28x8 6001 2 RS
5	1	180466-070	28mm Flange Hd Thru Bolt
6	2	180491UAT	C'Sunk Bolt OD 10 mm x 21 M6
7	1	180492UAT	C'Sunk Bolt OD 12 x 68mm M6
8	1	180496UAT	C'Sunk Bolt OD 10mm x 85
9	4	N/A	FOX IGUS Bushings
10	1	1092019	Internal Cable Stop
11	1	1093003	Cable Port Rubber Plug
12	2	180545	Conical Washer ID 12 mm 3 mm Thk.
13	1	1092020	Rep. Der.Hanger SRAM Shimano
14	1	1093002	Rep.Der.Hanager Shimano DIRECT MOUNT Only!
15	1	180448	Dropout Nut Shimano 142 mm
16	2	180628	Flip Chip Inner AL 7075
17	2	180629	Flip Chip Outer AL7075
18	12	180444IGS	IGUS Angular Contact Bearing
19	2	1804016IGS	Bushing I Glide J350-1214-15 ID 12mm OD 14 mm
20	2	180463-021	Key Head C'Sunk L Bolt Int. M6
21	4	180522	Rubber O-Ring 12.7 Fox Shock Pin
22	8	180543	O-Ring ID 20 mm W 1.25 Nitrile
23	1	180572	Rubber O-Ring ID 14 mm W 1.5 Nitrile
24	2	111989FOX	Shock Pind ID 10 mm x 22.2
25	1	N/A	Shock Pin Custom ID 8 x 22,2 mm
26	1	N/A	Shimano Axle 142x12 AX75
27	1	180487-010	Custom Low Flat Head Shoulder Screw M6-1.0
28	7	180566-012FBY	Flat Head C'Sunk Socket Screw M6-1.0 x 12 mm
29	1	180567-016FBY	Flat Head C'Sunk Socket Screw M8-1.25 x 16 mm
30	1	180571FBY	Set Screw Flt. M4 x 0.7 x 5 mm
31	2	N/A	Rear Shock 7,875" x 2,25" (Altitude)
32	1	180630	C'Sunk HD Thru Bolt OD 8 x 72 Int. M6
33	2	N/A	Shock Bushing ID 12.7 OD 15
34	2	180631	Shock Reducer Frt. IGUS ID 8mm 56 mm wide
35	2	3113001	Shock Reducer Rear IGUS ID 10 mm
36	2	3113003	Shock Reducer Frt. Std. ID 8 mm
37	2	180495UAT	Shock Reducer Rear Std. ID 10 mm
38	1	1093182	2013 Altitude/Instinct Top Link 95 mm
39	5	180476AST	C'Sunk Washer f. M6
40	1	180494UAT	Alloy Washer f. Angular Poly Brg.
41	1	180499AST	Bearing Cap OD 28mm M8
42	4	180490PMG	Alloy Washer Angular Poly Brg.
43	6	180493UAT	Alloy Washer Angular Poly Brg.ID 12 mm

Warranty Policy

Rocky Mountain Bicycles

Rocky Mountain Warranty Policy

At Rocky Mountain Bicycles, we stand behind every bike we build. If anything goes wrong with your bicycle, please contact the authorized Rocky Mountain Bicycle dealer in your area. All warranty and after sale service, must be handled by an Authorized Dealer. To locate your nearest Rocky Mountain dealer, please visit our dealer locator at www.bikes.com.

Warranty for ORIGINAL owners

We cover your Rocky Mountain frame from the **original date of purchase** against defects in material and workmanship.

Frame Material / Type of Use

CroMoly Steel:	Limited Lifetime*
Aluminum Hybrids:	Limited Lifetime*
Carbon Fiber:	5 years - Limited*
Aluminum front & fully suspended	5 years - Limited*
Road & Cross bikes:	5 years – Limited*
Downhill & Freeride:	3 years - Limited*

** Please refer to limitations stated in section 4, 5, 6, 7, & 8 in our owners' manual.*

Other Warranty Coverage against defects in workmanship and materials

Coating – paint and decals	1 year
Frame hardware, suspension, pivots and bushings	1 year
DH & Freeride frame hardware, suspension	6 months
Pivots and bushings	6 months

Please note: Non Rocky Mountain branded components are covered by the respective manufacturer's warranties.

What will void Your Warranty?

- Warranty is **not** valid for any bicycles previously used for commercial activity such as rental, courier, police, security etc.
- Installation of components, parts, or accessories not originally intended for or compatible with the bicycle (or frame) as sold.
- Purchasing a Rocky Mountain Bicycle from an unauthorized dealer.
- Purchasing a Rocky Mountain Bicycle or frame off third party internet sites (as eBay) no matter what the listing says.

What is Not Covered?

- Normal wear and tear.
- Damage or failure caused by accident, misuse, abuse or neglect. Improper assembly and/or lack of proper maintenance
- Extreme or improper use of your Rocky Mountain bicycle outside of its intended purpose.
- Rocky Mountain Bicycles does not guarantee the compatibility of original components with a warranty replacement frame
- UV rays effects (colors fading, turning yellow)
- The components, parts, or accessories not compatible with the bicycle (or frame)

Details of what is not covered under warranty

A. *Normal wear and tear on tires, tubes, brakes, gear cables, brake pads etc., are not covered. Your authorized Rocky Mountain dealer will inform you of what these normal maintenance items consist of.*

B. *Consequential damage or any damage caused by accident, misuse or abuse.*

C. *Improper assembly and/or lack of proper maintenance, sandblasting, sanding, grinding, wire brushing, filing, welding, brazing, drilled holes, anodizing, repainting, or chrome plating is not covered under your warranty and may void the warranty of the component manufacturers. Internal rust perforation on CroMoly steel frames is not covered under warranty.*

D. *You take great personal risk and shall forfeit the warranty, as outlined in the Warranty Table, when you ride in extreme terrain as depicted in mountain bike videos (i.e. riding "trials" style courses, riding ramps, doing stunts, riding on BMX tracks, riding down city stairs and embankments, or riding in other similar terrain. It is important to note that bent components, frames, forks, handlebars, seat posts, pedals, cranks and wheel rims are signs of accidents and/or abuse.*

E. *Labour for part replacement or changeover is not included.*

F. Rocky Mountain Bicycles retains the right to repair or replace at its discretion any part that is deemed a valid warranty. Please note that Rocky Mountain Bicycles cannot guarantee a colour match to the original component.

EXCLUSION AND LIMITATION OF DAMAGES

THE WARRANTY OF ROCKY MOUNTAIN BICYCLES IS LIMITED TO THE REPAIR OR REPLACEMENT OF THE PRODUCTS AND DOES NOT GRANT ANY WARRANTY EITHER EXPRESSED OR IMPLIED, LEGAL OR CONVENTIONAL AND DISCLAIMS ANY AND ALL IMPLIED WARRANTIES OF MERCHANTABILITY AND FITNESS FOR PARTICULAR PURPOSES, AND ROCKY MOUNTAIN SHALL UNDER NO CIRCUMSTANCES BE LIABLE FOR DIRECT OR INDIRECT, SPECIAL, INCIDENTAL OR CONSEQUENTIAL DAMAGES EVEN WHERE ROCKY MOUNTAIN HAS BEEN ADVISED OF SUCH DAMAGES AND ROCKY MOUNTAIN'S LIABILITY SHALL BE LIMITED TO \$ 50.00.

Making a Warranty Claim:

- Please contact your original authorized Rocky Mountain dealer. If this business no longer carry or exists, please contact the closest Rocky Mountain Dealer near you. If you have purchased your Rocky Mountain bicycle from an authorized on-line retailer, you must contact them directly.
- Please provide copy of **original sales receipt** for proof of **original ownership**
- Please bring your **complete bicycle** to your authorized Rocky Mountain dealer for inspection. Your local dealer will provide the quickest answers and solutions for your warranty questions.
- For International dealers, please contact your local distributor.

2014 Critical Dimensions:

Frame	Headset	Max Fork Length	Seat Post Ø	Front Derailleur / ISCG Standard	Bottom Bracket
Element 29" RSL	542 532	120mm	30.9 mm	E type Low Direct Mount S3 Bottom Pull	Press Fit BB92
Element 29"	2544 2536	120mm	30.9 mm	E type Low Direct Mount S3 Bottom Pull	Press Fit BB92
Element MSL	542 532	120mm	30.9 mm	E type Low Direct Mount S3 Bottom Pull	Press Fit BB92
Element 26"		120mm	30.9 mm	E type Low Direct Mount S3 Bottom Pull	Press Fit BB92
	2544 2536				
Vertex RSL	542 532	100mm	27.2 mm	34.9 mm Down Swing High Clamp Bottom Pull	Press Fit BB92
Vertex	2544 2536	100mm	27.2 mm	31.8 mm Top Swing Low Clamp Bottom Pull	Press Fit BB92
Slayer	2544 2536	170mm	30.9 mm	E type Low Direct Mount S3 Bottom Pull / ISCG 08	73 mm
Slayer SS					
	2544 2536	130mm	30.9 mm	E type Low Direct Mount S3 Bottom Pull / ISCG 08	73 mm
Altitude					
	2544 2536	190mm	30.9 mm	E type Low Direct Mount S3 Bottom Pull / ISCG 03	Press Fit BB92
Instinct					
	2544 2536	120mm	30.9 mm	E type Low Direct Mount S3 Bottom Pull / ISCG 03	Press Fit BB92
Flatline					
	2548 2548 or EC48 " for Fox 40	200mm	30.9 mm	ISCG 08	83 mm
Flow					
	542 542	100mm	27.2 mm	N/A	68 mm
Sport Headtail 29"	2544 2544 or EC44 " for tapered	100mm	27.2 mm	31.8 mm Top Swing Low Clamp Top Pull	73 mm
Sport Headtail 26"	2544 2544 or EC44 " for tapered	100mm	27.2 mm	31.8 mm Top Swing Low Clamp Top Pull	73 mm
Edge 24"	EC34 EC34	30mm	27.2 mm	31.8 mm Top Swing Low Clamp Top Pull	68 mm
Edge 20"	EC34 EC34	30mm	27.2 mm	N/A	68 mm
Solo CX	2544 2544	N/A	31.6 mm	34.9 mm Down Swing High Clamp Bottom Pull	68 mm
Solo RSL	542 532	N/A	27.2 mm	Braze On Down Swing High Clamp Bottom Pull	BB90
Prestige	542 532	N/A	27.2 mm	Braze On Down Swing High Clamp Bottom Pull	BB90
Oxygen	2544 2544	N/A	31.6 mm	34.9 mm Down Swing High Clamp Bottom Pull	68 mm
Sharpa	EC34 EC34	N/A	27.2 mm	29.8 mm Down Swing High Clamp Bottom Pull	68 mm
Metropolis	EC34 EC34	N/A	31.6 mm	34.9 mm Top Swing Low Clamp Top Pull	68 mm
RC	2544 2544	N/A	31.6 mm	34.9 mm Top Swing Low Clamp Bottom Pull	68 mm
Whistler	2544 2544	80mm	27.2 mm	31.8 mm Top Swing Low Clamp Bottom Pull	68 mm
Metro	2544 2544	N/A	27.2 mm	31.8 mm Top Swing Low Clamp	68 mm